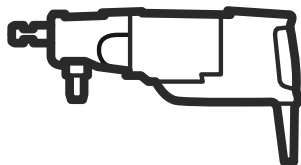




Husqvarna[®]



DM 200

Contents

Introduction.....	2	Technical data.....	21
Safety.....	4	Accessories.....	22
Operation.....	10	Service.....	23
Maintenance.....	15	Declaration of Conformity.....	24
Troubleshooting schedule.....	18	Registered trademarks.....	25
Transportation, storage and disposal.....	19		

Introduction

Product description

This Husqvarna drill motor is a handheld diamond core drill.

It can be used wet in all approved materials, if you use the water supply. Refer to *Intended use on page 2*. It can be used dry in masonry, if you use a dust extractor.

The diamond drill bit is a hollow drill that has diamond segments.

If you drill wet, the water goes through the ball valve, hose and the diamond drill bit. This decreases the temperature in the drill bit. The water absorbs the dust and flushes the drilled material out off the slot. Use a slurry collector and a ring that collects the water to remove the water again.

If you drill dry, use a dust extractor to remove the material through the drill bit and the dust extractor connection. This decreases the temperature in the drill bit.

Some models of this product have embedded connectivity. Refer to *Embedded connectivity on page 2*.

Intended use

The product is used to drill concrete, rock, asphalt and masonry. All other use is incorrect.

The product is used in industrial operations by operators with experience.

Product damage

We are not responsible for damages to our product if:

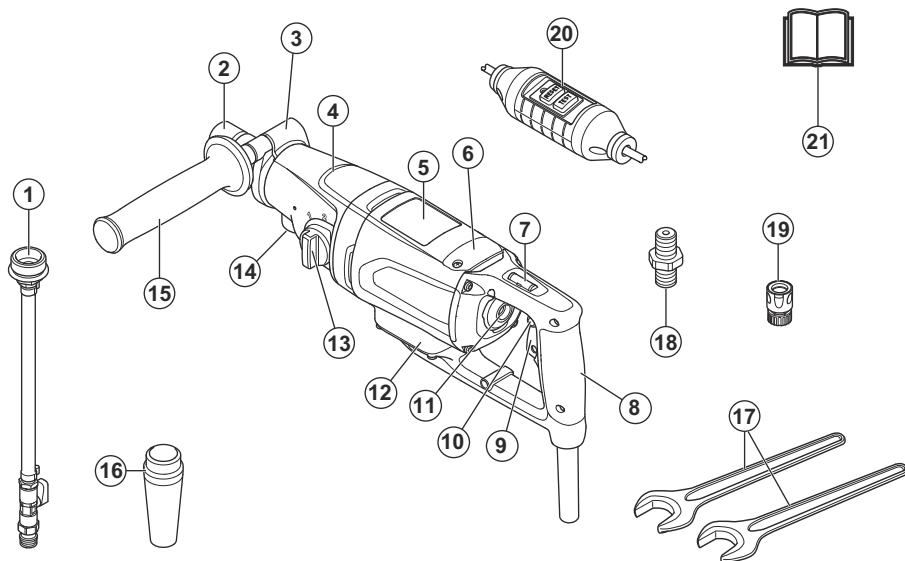
- the product is incorrectly repaired.
- the product is repaired with parts that are not from the manufacturer or not approved by the manufacturer.
- the product has an accessory that is not from the manufacturer or not approved by the manufacturer.
- the product is not repaired at an approved service center or by an approved authority.

Embedded connectivity

The cloud asset management solution Husqvarna Fleet Services™ gives the fleet manager an overview of all products that are connected via either embedded or aftermarket sensors. The position of the gateway or smartphone can be used to indicate the location of connected products. The sensors record data like runtime, service intervals and more. For more information about the cloud asset management solution Husqvarna Fleet Services™, download the iOS or Android app Husqvarna Fleet Services at <https://apps.apple.com/se/app/husqvarna-fleet-services/id1334672726> or <https://play.google.com/store/apps/details?id=com.husqvarna.hfsmobile&hl=en>. Speak to your Husqvarna sale representative for more information.

Products with embedded connectivity are connected via the embedded Husqvarna Fleet Services™ sensor that has the Bluetooth Low Energy (BLE) function. For more information regarding how to use it, refer to *To use embedded connectivity with fleet on page 10*. For information about the BLE technology radio spectrum, refer to *Embedded connectivity on page 22*.

Product overview



1. Water connector
2. Drill spindle
3. Clamp ring
4. Gearbox
5. Motor
6. Inspection cover
7. Spirit level
8. Main handle
9. Power switch
10. Trigger lock button
11. Spirit level
12. Electronics box
13. Gear selector
14. Mounting thread for water/dust extractor connector
15. Auxiliary handle
16. Dust extractor connector
17. Wrenches
18. Adapter coupling
19. Gardena® male coupling with water valve
20. PRCD

Note: In this manual we use the term PRCD for PRCD and GFCI.

21. Operator's manual

Symbols on the product



WARNING! This product can be dangerous and cause serious injury or death to the operator or others. Be careful and use the product correctly.



Read the operator's manual carefully and make sure that you understand the instructions before you use this product.



Always use approved personal protective equipment. Refer to *Personal protective equipment* on page 8.



This product complies with applicable EC directives.



The symbol means that the product is not domestic waste. Recycle it through your local collection system for electrical and electronic equipment. This contributes to proper end of life waste management. Contact local authorities, domestic waste services, your Husqvarna servicing dealer or retailer for information. Incorrect disposal may have potential negative

effects on the environment and human health, due to the potential presence of hazardous substances.

Note: Other symbols/decals on the product refer to special certification requirements for some markets.

Safety

Safety definitions

Warnings, cautions and notes are used to point out particularly important parts of the manual.



WARNING: Used if there is a risk of injury or death for the operator or bystanders if the instructions in the manual are not obeyed.



CAUTION: Used if there is a risk of damage to the product, other materials or the adjacent area if the instructions in the manual are not obeyed.

Note: Used to give more information that is necessary in a given situation.

General power tool safety warnings



WARNING: Read all safety warnings, instructions, illustrations and specifications provided with this power tool. Failure to follow all instructions listed below may result in electric shock, fire and/or serious injury.

Save all warnings and instructions for future reference. The term "power tool" in the warnings refers to your mains-operated (corded) power tool or battery-operated (cordless) power tool.

Work area safety

- **Keep work area clean and well lit.** Cluttered or dark areas invite accidents.
- **Do not operate power tools in explosive atmospheres, such as in the presence of flammable liquids, gases or dust.** Power tools create sparks which may ignite the dust or fumes.
- **Keep children and bystanders away while operating a power tool.** Distractions can cause you to lose control.

Electrical safety

- **Power tool plugs must match the outlet. Never modify the plug in any way. Do not use any adapter plugs with earthed (grounded) power tools.** Unmodified plugs and matching outlets will reduce risk of electric shock.
- **Avoid body contact with earthed or grounded surfaces, such as pipes, radiators, ranges and**

refrigerators. There is an increased risk of electric shock if your body is earthed or grounded.

- **Do not expose power tools to rain or wet conditions.** Water entering a power tool will increase the risk of electric shock.
- **Do not abuse the cord. Never use the cord for carrying, pulling or unplugging the power tool. Keep cord away from heat, oil, sharp edges or moving parts.** Damaged or entangled cords increase the risk of electric shock.
- **When operating a power tool outdoors, use an extension cord suitable for outdoor use.** Use of a cord suitable for outdoor use reduces the risk of electric shock.
- **If operating a power tool in a damp location is unavoidable, use a residual current device (RCD) protected supply.** Use of a RCD reduces the risk of electric shock

Personal safety

- **Stay alert, watch what you are doing and use common sense when operating a power tool. Do not use a power tool while you are tired or under the influence of drugs, alcohol or medication.** A moment of inattention while operating power tools may result in serious personal injury.
- **Use personal protective equipment. Always wear eye protection.** Protective equipment such as dust mask, non-skid safety shoes, hard hat or hearing protection used for appropriate conditions will reduce personal injuries.
- **Prevent unintentional starting. Ensure the switch is in the off-position before connecting to power source, picking up or carrying the tool.** Carrying power tools with your finger on the switch or energising power tools that have the switch on invites accidents.
- **Remove any adjusting key or wrench before turning the power tool on.** A wrench or a key left attached to a rotating part of the power tool may result in personal injury.
- **Do not overreach. Keep proper footing and balance at all times.** This enables better control of the power tool in unexpected situations.
- **Dress properly. Do not wear loose clothing or jewellery. Keep your hair and clothing away from moving parts.** Loose clothes, jewellery or long hair can be caught in moving parts.
- **If devices are provided for the connection of dust extraction and collection facilities, ensure these are connected and properly used.** Use of dust collection can reduce dust-related hazards.
- **Do not let familiarity gained from frequent use of tools allow you to become complacent and ignore**

tool safety principles. A careless action can cause severe injury within a fraction of a second.

tool "live" and could give the operator an electric shock.

Power tool use and care

- **Do not force the power tool. Use the correct power tool for your application.** The correct power tool will do the job better and safer at the rate for which it was designed.
- **Do not use the power tool if the switch does not turn it on and off.** Any power tool that cannot be controlled with the switch is dangerous and must be repaired.
- **Disconnect the plug from the power source and/or remove the battery pack, if detachable, from the power tool before making any adjustments, changing accessories, or storing power tools.** Such preventive safety measures reduce the risk of starting the power tool accidentally.
- **Store idle power tools out of the reach of children and do not allow persons unfamiliar with the power tool or these instructions to operate the power tool.** Power tools are dangerous in the hands of untrained users.
- **Maintain power tools and accessories. Check for misalignment or binding of moving parts, breakage of parts and any other condition that may affect the power tool's operation. If damaged, have the power tool repaired before use.** Many accidents are caused by poorly maintained power tools.
- **Keep cutting tools sharp and clean.** Properly maintained cutting tools with sharp cutting edges are less likely to bind and are easier to control.
- **Use the power tool, accessories and tool bits etc. in accordance with these instructions, taking into account the working conditions and the work to be performed.** Use of the power tool for operations different from those intended could result in a hazardous situation.
- **Keep handles and grasping surfaces dry, clean and free from oil and grease.** Slippery handles and grasping surfaces do not allow for safe handling and control of the tool in unexpected situations.

Service

- **Have your power tool serviced by a qualified repair person using only identical replacement parts.** This will ensure that the safety of the power tool is maintained.

Safety instructions for all operation

- **Wear ear protection when impact drilling.** Exposure to noise can cause hearing loss.
- **Use the auxiliary handle(s).** Loss of control can cause personal injury.
- **Hold the power tool by insulated gripping surfaces, when performing an operation where the cutting accessory or fasteners may contact hidden wiring or its own cord.** Cutting accessory contacting a "live" wire may make exposed metal parts of the power

Safety instructions when using long drill bits

- **Never operate at higher speed than the maximum speed rating of the drill bit.** At higher speeds, the bit is likely to bend if allowed to rotate freely without contacting the workpiece, resulting in personal injury.
- **Always start drilling at low speed and with the bit tip in contact with the workpiece.** At higher speeds, the bit is likely to bend if allowed to rotate freely without contacting the workpiece, resulting in personal injury.
- **Apply pressure only in direct line with the bit and do not apply excessive pressure.** Bits can bend causing breakage or loss of control, resulting in personal injury.

Diamond drill safety warnings

- **When performing drilling that requires the use of water, route the water away from the operator's work area or use a liquid collection device.** Such precautionary measures keep the operator's work area dry and reduce the risk of electrical shock.
- **Operate power tool by insulated grasping surfaces, when performing an operation where the cutting accessory may contact hidden wiring or its own cord.** Cutting accessory contacting a "live" wire may make exposed metal parts of the power tool "live" and could give the operator an electric shock.
- **Wear hearing protection when diamond drilling.** Exposure to noise can cause hearing loss.
- **When the bit is jammed, stop applying downward pressure and turn off the tool.** Investigate and take corrective actions to eliminate the cause of the bit jamming.
- **When restarting a diamond drill in the workpiece, check that the bit rotates freely before starting.** If the bit is jammed, it may not start, may overload the tool, or may cause the diamond drill to release from the workpiece.
- **When securing the drill stand with anchors and fasteners to the workpiece, ensure that the anchoring used is capable of holding and restraining the machine during use.** If the workpiece is weak or porous, the anchor may pull out causing the drill stand to release from the workpiece.
- **When securing the drill stand with a vacuum pad to the workpiece, install the pad on a smooth, clean, non-porous surface.** Do not secure to laminated surfaces such as tiles and composite coating. If the workpiece is not smooth, flat or well affixed, the pad may pull away from the workpiece.
- **Ensure there is sufficient vacuum before and during drilling.** If the vacuum is insufficient, the pad may release from the workpiece.
- **Never perform drilling with the machine secured by the vacuum pad only, except when drilling downwards.** If the vacuum is lost, the pad will release from the workpiece.

- **When the drilling through walls, ensure to protect persons and the work area on the other side.** The bit may extend through the hole or the core may fall out on the other side.
- **Do not use this tool for overhead drilling with water supply.** Water entering the power tool will increase the risk of electric shock.

General safety instructions

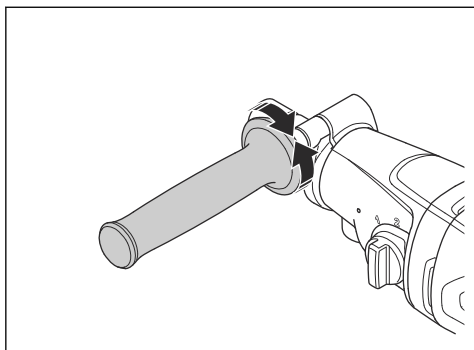


WARNING: Read the warning instructions that follow before you use the product.

- This product is a dangerous tool if you are not careful or if you use the product incorrectly. This product can cause serious injury or death to the operator or others. Before you use the product, you must read and understand the contents of this operator's manual.
- This product is not intended for use by persons (including children) with reduced physical, sensory or mental capabilities, or lack of experience and knowledge.
- Save all warnings and instructions.
- Comply with all applicable laws and regulations.
- The operator and the employer of the operator must know and prevent the risks during operation of the product.
- Do not let a person operate the product unless they read and understand the contents of the operator's manual.
- Do not operate the product unless you receive training before use. Make sure that all operators receive training.
- Do not let a child operate the product.
- Only let approved persons operate the product.
- The operator is responsible for accidents that occur to other persons or their property.
- Do not use the product if you are tired, ill, or under the influence of alcohol, drugs or medicine.
- Always be careful and use your common sense.
- This product produces an electromagnetic field during operation. This field can under some circumstances interfere with active or passive medical implants. To decrease the risk of serious injury or death, we recommend persons with medical implants to speak to their physician and the medical implant manufacturer before operating this product.
- Keep the product clean. Make sure that you can clearly read signs and decals.
- Do not use the product if it is damaged.
- Do not make modifications to this product.
- Do not operate the product if it is possible that other persons have made modifications to the product.
- Do not overreach. Keep proper footing and balance at all times. This enables better control of the power tool in unexpected situations.
- Do not use this tool for overhead drilling with water supply. Water entering the power tool will increase the risk of electric shock.
- Do not operate the product unless you can get aid if an accident occurs.
- Do not use the product in bad weather, such as fog, rain, strong winds, intense cold and equivalent conditions. Dangerous conditions, such as slippery surfaces, can occur because of bad weather.
- Look out for persons, objects and situations that can prevent safe operation of the product.
- Make sure that you always can stop the motor quickly in an emergency.
- Make sure that there are no pipes or electrical cables in the area where the hole will be made.
- If the product does not operate correctly, stop the motor.
- Make sure that you are in a safe and stable position during operation.
- Stay at a distance from the drill bit when the motor is on.
- Always disconnect the power cord before you go away from the product.
- Keep all parts in good condition and make sure that all fixtures are correctly tightened.
- If vibrations occur in the product or the noise level from the product is unusually high, stop the product immediately. Examine the product for damages. Repair damages or let an approved service agent do the repair.
- Always use approved accessories. Speak to your dealer for more information.
- Do not drill handheld from a ladder or a scaffold.



- Make sure you stand firmly.
- Do not exceed the maximum recommended drill diameter during handheld operation. Refer to *Technical data on page 21*.
- Lock the auxiliary handle firmly in place prior to drilling. Refer to *To remove and install the auxiliary handle on page 11*.



Dust safety



WARNING: Read the warning instructions that follow before you use the product.

Using this tool may generate Silica dust (Silica is a basic component of sand, quartz, brick clay, granite and numerous other minerals and rocks). Exposure to excessive amounts of silica dust can

cause respiratory disease such as chronic bronchitis, silicosis, and pulmonary fibrosis, these diseases may be fatal. To mitigate exposure to Silica dust, Husqvarna recommends various options such as:

- Using water to bind the dust during cutting or grinding.
- Using a dust extraction system in combination with the cutting or grinding tool.
- Using an air purifier system in combination with the dust extractor.
- Using an appropriate breathing mask based on the material being cut or ground.

PPE requirements related to Silica dust or other inhalable substances can vary based on local and national laws and regulations. Please consult these laws and regulations to determine allowable exposure limits as well as PPE requirements. Always use appropriate practices and PPE to mitigate exposure.

Vibration and noise

- The vibration emission and noise emission during actual use of the power tool can differ from the declared total value depending on the ways in which the tool is used.
- The need to identify safety measures to protect the operator that are based on an estimation of exposure in the actual conditions of use (taking account of all parts of the operating cycle such as the times when the tool is switched off and when it is running idle in addition to the trigger time).

Always use common sense



WARNING: Under no circumstances should you modify the original design of the product without approval from the manufacturer. Always use original spare parts. Unauthorized modifications and/or accessories may lead to serious injury or death to the user or others.



WARNING: The use of products such as cutters, grinders, drills, that sand or form material can generate dust and vapours which may contain hazardous chemicals. Check the nature of the material you intend to process and use an appropriate breathing mask.

It is not possible to cover every conceivable situation you can face when using the product. Always exercise care and use your common sense. Avoid all situations which you consider to be beyond your capability. If you still feel uncertain about operating procedures after reading these instructions, you should consult an expert before continuing.

Do not hesitate to contact your Husqvarna representative if you have any more questions about the

use of the product. We will willingly be of service and provide you with advice as well as help you to use your product both efficiently and safely.

Let your Husqvarna dealer check the product regularly and make essential adjustments and repairs.

Husqvarna Construction Products has a policy of continuous product development. Husqvarna reserves the right to modify the design and appearance of products without prior notice and without further obligation introduce design modifications.

All information and all data in the operator's manual were applicable at the time the operator's manual was sent to print.

Personal protective equipment



WARNING: Read the warning instructions that follow before you use the product.

- Always use correct personal protective equipment when you operate the product. The personal protective equipment does not erase the risk of injury. The personal protective equipment decreases the grade of injury if an accident occurs. Let your dealer help you select the right equipment.
- Use approved eye protection while you operate the product.
- Do not use loose, heavy and not applicable clothing. Use clothes that let you move freely.
- Use approved protective gloves that enables a solid hold and prevents skin irritation.
- Use an approved protective helmet.
- Always use approved hearing protection while you operate the product. Noise for a long period can cause noise-induced hearing loss.
- The product makes dust and fumes that contain dangerous chemicals. Use an approved breathing protection.
- Use boots with steel toe-caps and non-slip soles.
- Make sure that you have a first aid kit near.
- Sparks can occur when you operate the product. Make sure that you have a fire extinguisher near.

Safety devices on the product



WARNING: Read the warning instructions that follow before you use the product.

- Never use a product that has faulty safety equipment! If your product fails any checks contact your service agent to get it repaired.
- Do not use the product if protective plates, protective covers, safety switches or other protective devices are not attached or are damaged.

Motor overload protection, Elgard™

The motor overload protection engages if the motor has too high load or the drill bit cannot move freely.

The motor overload protection causes the power from the motor to decrease and increase in short intervals for some seconds. Then, if you do not decrease the force, the motor stops. Refer to *To reset the motor overload protection on page 15*.

PRCD



WARNING: Not applicable for 110V type sold in United Kingdom and Ireland. United Kingdom and Ireland: Do not operate the 110V type of the product without an isolation transformer, refer to EN/IEC 61558-1 and EN/IEC 61558-2-23. The isolation transformer must have a grounded earth wire on the secondary winding side.



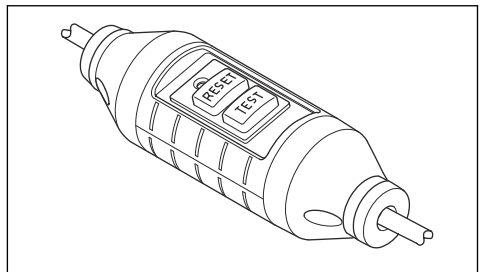
WARNING: Do not put the PRCD into water.



WARNING: Before you operate the product, always do a check of the PRCD. Refer to *To examine the PRCD on page 8*.

The product has a PRCD installed on the power cord. The PRCD is for protection and engages if an electrical fault occurs. Refer to *Technical data on page 21* for information about at which current the PRCD engages.

The red light shows that the PRCD is on and that the product can be started. If the red light does not show, push the RESET button.



To examine the PRCD



WARNING: Not applicable for 110V type sold in United Kingdom and Ireland. Refer to *PRCD on page 8*.

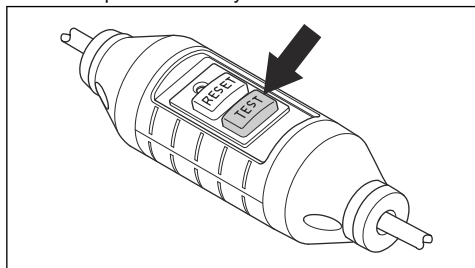


WARNING: The PRCD must be examined each time the power plug is connected to a power outlet.



WARNING: If the PRCD must be repaired, always speak to an approved Husqvarna service agent.

1. Connect the power plug of the product to a power outlet.
2. Push the "RESET" button. The indicator above the button is red when the current is connected.
3. Start the product, refer to *To start the product on page 13*.
4. Push the "TEST" button. If the product stops, the PRCD operates correctly.



Isolation transformer

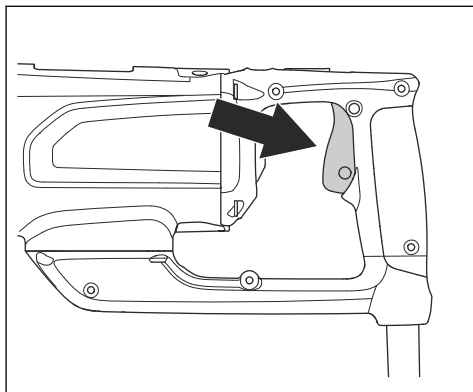
Note: Applicable for 110V type sold in United Kingdom and Ireland.

Do not operate the 110V type of the product without isolation transformer that refers to EN/IEC 61558-1 and EN/IEC 61558-2-23.

The isolation transformer must have ground wires on the 230V and the 110V side.

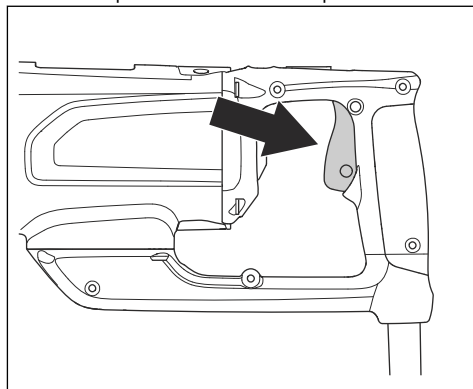
Power switch

The power switch is used to start and stop the product.

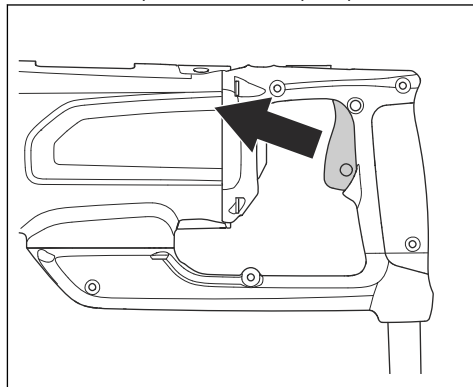


To examine the power switch

1. Connect the power plug of the product to a power outlet.
2. Push the power switch to start the product.



3. Release the power switch to stop the product.



Friction clutch

The friction clutch is integrated in the gearbox of the product. It prevents damage to the product in the event of a sudden stop of the spindle shaft.



CAUTION: Make sure that the release time of the clutch is not more than 3-4 seconds, because if not wear and heat will increase quickly.

Safety instructions for maintenance



WARNING: Inspection and/or maintenance should be carried out with

the motor switched off and the plug disconnected.

- Maintain power tools and accessories. Check for misalignment or binding of moving parts, breakage of parts and any other condition that may affect the power tool's operation. If damaged, have the power tool repaired before use. Many accidents are caused by poorly maintained power tools.
- Keep cutting tools sharp and clean. Properly maintained cutting tools with sharp cutting edges are less likely to bind and are easier to control.
- Have your power tool serviced by a qualified repair person using only identical replacement parts. This will ensure that the safety of the power tool is maintained.

Operation

To do before you operate the product

1. Read the operator's manual carefully and make sure that you understand the instructions.
2. Do the daily maintenance. Refer to *Maintenance schedule on page 15*.
3. Make sure that the nominal voltage and current in the power outlet is the same as the voltage and current of the product.
4. Make sure that the PRCD is started. Refer to *PRCD on page 8* and *To examine the PRCD on page 8*.
5. Make sure that the work area is clean and bright.
6. Use personal protective equipment. Refer to *Personal protective equipment on page 8*.
7. Make sure that the product is installed correctly. The drill bit must be attached correctly.
8. During handheld drilling, the auxiliary handle must be connected and fully tightened. Refer to *To remove and install the auxiliary handle on page 11*.
9. When you operate the product dry, use a dust extractor.
10. When you operate the product wet, make sure that the water system is not damaged and use the water connector. Refer to *To prepare the product for wet drilling on page 12*.

To use embedded connectivity with fleet

Note: This part is applicable only for products supplied with embedded connectivity.

Note: Radio transmission by the Bluetooth® function will be enabled on the first time of connection to a power outlet, and stay on after that.

1. Download the Husqvarna Fleet Services iOS or Android app Husqvarna Fleet Services.
2. Go to Husqvarna Fleet Services website <https://fleetservices.husqvarna.com> for more information.

To use the product with a drill stand



WARNING: If you use a drill stand, read this section carefully.



WARNING: Read the operator's manual for the drill stand carefully.

To attach the product to a drill stand, refer to the operator's manual for the drill stand.

- Remove the auxiliary handle when you use the product with a drill stand. Refer to *To remove and install the auxiliary handle on page 11*.
- Always use a drill stand if you stand on a scaffold when you drill.
- Make sure that the drill stand is correctly attached.
- Make sure that the product is correctly attached in the drill stand.
- Use only with approved Husqvarna drill stands.
- Use the trigger lock function if it is necessary. Refer to *To use the trigger lock button on page 13*.

To use the product for handheld operation



WARNING: Read and understand the safety chapter before you use the product for handheld operation. Refer to *Safety on page 4*.

- Install the auxiliary handle and lock it tightly in position before you start to drill. Refer to *To remove and install the auxiliary handle on page 11*.
- Install a drill that is not larger than the recommended maximum diameter for handheld operation. Refer to *Technical data on page 21*. The larger the drill bit, the more dangerous reaction if the drill stops to move freely.
- During operation, keep a stable position with your feet on the ground.



WARNING: Do not drill from a ladder. If the drill bit stops suddenly, the strong torque can cause you to fall.

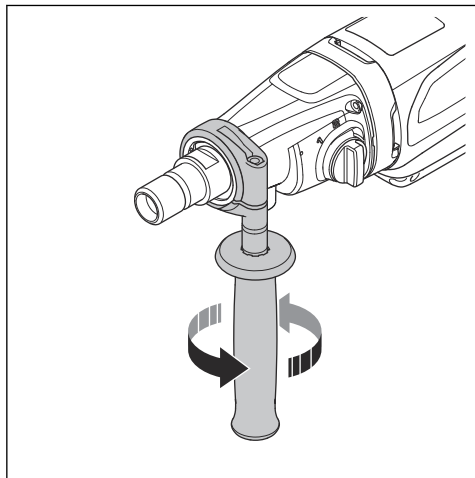
- Operate the product in the second gear. Refer to *To change gear on page 12*.



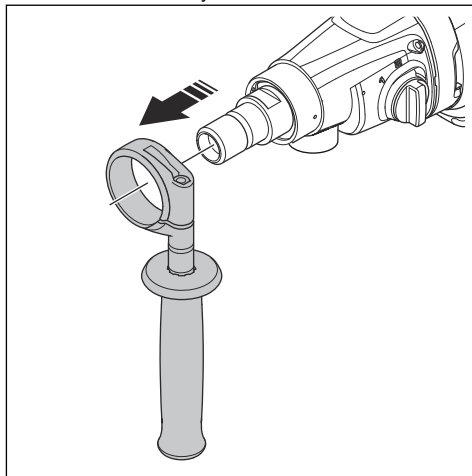
WARNING: Do not use the product for handheld operation in the first gear. The product has a strong torque that can result in injury if the drill bit stops to move freely.

To remove and install the auxiliary handle

1. Turn the auxiliary handle counterclockwise to release it.

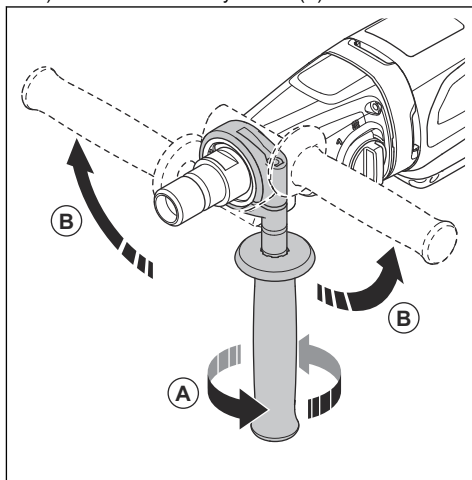


2. Remove the auxiliary handle.



3. Install the auxiliary handle in the opposite sequence. Do the steps that follow to adjust the auxiliary handle to an applicable operation position:

- a) Loosen the auxiliary handle (A).



- b) Move the auxiliary handle around the spindle shaft (B).
- c) Tighten the auxiliary handle at an applicable position.

To prepare the product for dry drilling

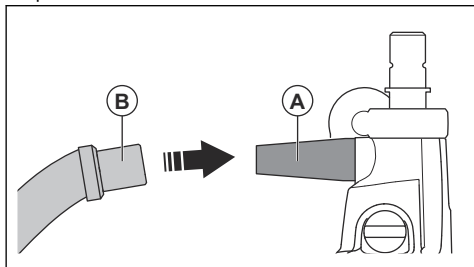


WARNING: Dust is made when you drill, which can cause injuries if breathed in. Use approved breathing protection.



WARNING: Do not use a house-hold vacuum cleaner. Use only designated dust extractors for hazardous dust. Refer to *Recommended dust extractor capacity on page 22* for minimum properties.

1. Attach the dust extractor connector (A) to the product.



2. Attach the dust extractor (B) to the dust extractor connector.
3. Start the dust extractor.

To prepare the product for wet drilling



CAUTION: Make sure that the maximum water pressure is not too high. Refer to *Technical data on page 21*.

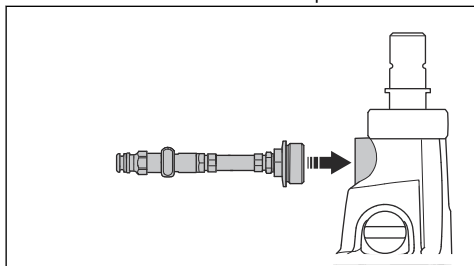


CAUTION: Use only clean water to prevent dirt blockage in the water system.

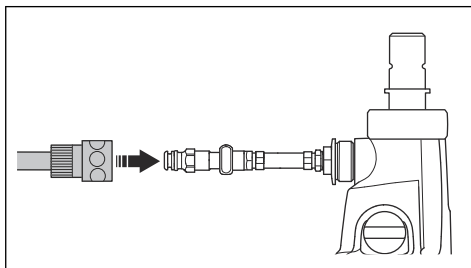


CAUTION: Use only an approved water supply coupling. Speak to your dealer for more information.

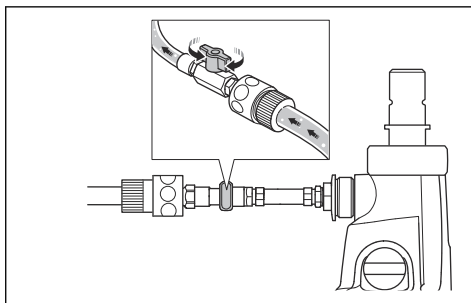
1. Attach the water connector to the product.



2. Connect the male coupling with water valve to the water connector.



3. Open the water system and adjust the water flow with the valve. Set the water pressure to remove all waste material from the drill hole.



To decrease the temperature of the motor

- Operate the product with no load for 2 minutes to decrease the temperature of the motor.

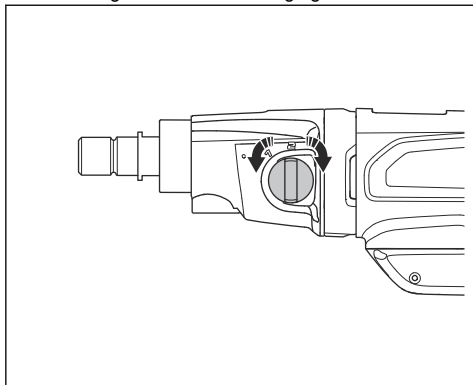
To change gear



CAUTION: Change gear only when the motor decreases in speed or stops. Do not use force to change gear.

- Make sure that you always use the applicable speed for the drill bit diameter. Refer to the rating plate on the product or *Technical data on page 21*.

- Turn the gear selector to change gear.

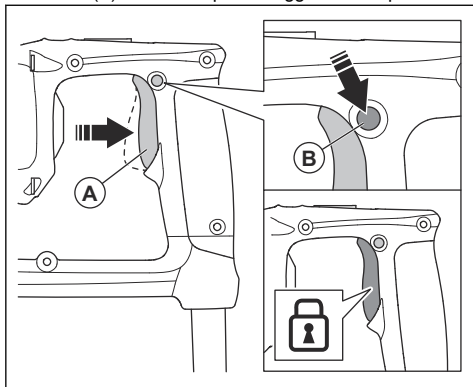


To use the trigger lock button



WARNING: The trigger lock button must only be used when you use a drill stand.

- Press the power trigger (A) and the trigger lock button (B) to lock the power trigger in start position.



- When the trigger lock button is engaged, press the power trigger (A) to disengage it.

To remove and install a drill bit

To remove or install a drill bit, you need a drill bit, the supplied wrench and water resistant grease.



WARNING: Use protective gloves.

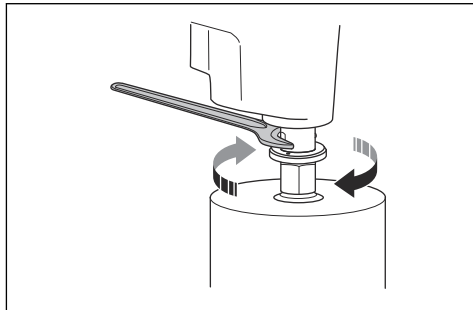


WARNING: Let the product become cool before you remove the drill bit. The drill bit and the adjacent area are very hot after operation.



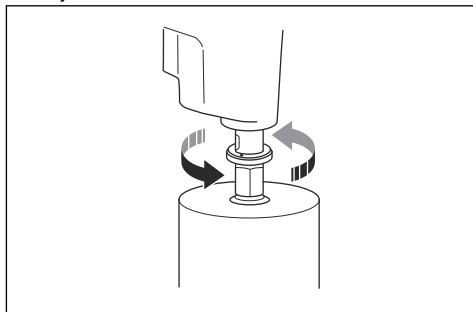
WARNING: Only use diamond drill bits that are approved for your product. Speak to your Husqvarna dealer for more information.

1. Make sure that the product is disconnected from the power source.
2. Lock the spindle axle with the wrench.
3. Turn the drill bit clockwise to remove it.



CAUTION: Do not hit the product to remove the drill bit. There is a risk of damage to the gearbox.

4. Lubricate the spindle shaft thread with water resistant grease.
5. Turn the drill bit counterclockwise to install it. Tighten fully.



To start the product

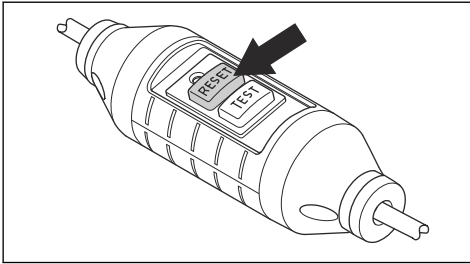


WARNING: Make sure that the drill bit can rotate freely. It starts to rotate when the motor starts.

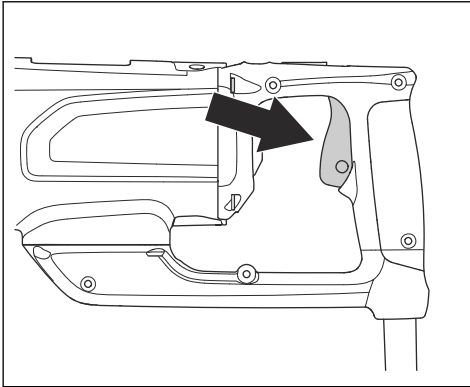


WARNING: If this is the first time the product is started for the day, make sure you make a check of the PRCD. Refer to *To examine the PRCD* on page 8.

1. Push the "RESET" button on the PRCD.



2. Set the gear selector in the correct position for the operation. Refer to *To change gear on page 12*.
3. Prepare the product for wet drilling or for dry drilling. Refer to *To prepare the product for wet drilling on page 12* or *To prepare the product for dry drilling on page 11*.
4. Push and hold the power switch.



To operate the product



WARNING: If the PRCD engages, remove the drill bit from the hole before you push "RESET".



WARNING: Dangerous accidents can occur if the concrete core stays in the drill bit when you remove the drill bit from the hole.



CAUTION: Make sure that no objects hit the drill bit.



CAUTION: Do not use more force than necessary. This only makes the operation slow and causes overload to the motor.

1. Install an applicable drill bit. Refer to *To remove and install a drill bit on page 13*.

2. Start the product. Refer to *To start the product on page 13*.

3. Do 1 of the steps that follow:

- a) For wet drilling, make sure that the water hose is connected and that the water system is open.



CAUTION: It is important that the water removes all the dust during wet drilling. Increase the water pressure if you notice that dust stays in the drill hole during operation.

- b) For dry drilling, make sure that the dust extractor is connected and on.



CAUTION: It is important that the dust extractor removes all the dust during dry drilling. Stop the product and do a check of the dust extractor if you notice that dust stays in the drill hole during operation.

4. Operate the product with the power trigger:

- a) Push the power trigger to start the rotation of the drill bit.
- b) Release the power trigger to stop the rotation of the drill bit.



Note: For operation with a drill stand, engage the trigger lock button if it is necessary. Refer to *To use the trigger lock button on page 13*.

5. Increase the motor speed to the maximum speed before you let the drill bit touch the surface.
6. Use very small pressure initially to keep the drill bit in the correct position.
7. If you drill through iron reinforcements, use more initial pressure and a lower gear than if there were no iron reinforcements.
8. Remove the drill bit from the hole when it is complete.
9. Stop the product. Refer to *To stop the product on page 15*.



WARNING: For wet drilling, do not stop the water flow.



WARNING: For dry drilling, do not stop the dust extractor.

10. After dry drilling, tap the drill bit lightly with a wrench to release dust in the drill bit.
11. If the core does not come out easily, do the steps that follow:
 - a) Put the opening of the drill bit on the ground.

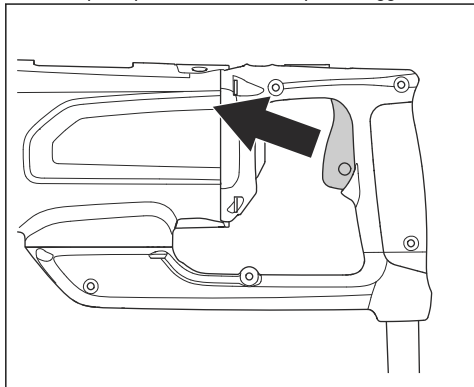
- b) Remove the water hose or dust extractor hose.
 - c) Let the core out slowly from the drill bit.
12. Clean dust from the core bit with the water hose or the dust extractor.

To stop the product



WARNING: The drill bit continues to rotate for some time after the motor stops. Do not stop the drill bit with your hands. Injuries can occur.

1. To stop the product, release the power trigger.



2. Wait until the drill bit has fully stopped.
3. For wet drilling, do the steps that follow:
 - a) Stop the water flow.
 - b) Remove the drill bit. Refer to *To remove and install a drill bit on page 13*.
4. For dry drilling, do the steps that follow:
 - a) Remove the drill bit. Refer to *To remove and install a drill bit on page 13*.



WARNING: Make sure that the dust extractor is on and connected to the product.

- b) Stop the dust extractor.
5. Disconnect the product from the power source.

To reset the motor overload protection

1. Stop the product. Refer to *To stop the product on page 15*.
2. Remove the blockage from the drill bit.
3. Start the product. Refer to *To start the product on page 13*.

Maintenance

Introduction



WARNING: Read and understand the safety chapter before you do maintenance on the product.



WARNING: To prevent injury, disconnect the power cord before you do maintenance.

Maintenance schedule

* = General maintenance done by the operator. The instructions are not given in this operator's manual.

X = The instructions are given in this operator's manual.

O = Speak to a Husqvarna service agent.

Maintenance	Before each use	After each use	Daily	After the first 100 h	After each 100 h
Make sure that movable parts function correctly and move freely.	*				
Make sure that the cutting tool is sharp and clean.	*				
Make sure that the PRCD functions correctly. ¹	X				
Examine the power cord, other cables, and the power plug for damage.	*	*			

¹ Not applicable for 100–120 V type sold in United Kingdom and Ireland. Refer to *PRCD on page 8*.

Maintenance	Before each use	After each use	Daily	After the first 100 h	After each 100 h
Make sure that the handles and holding surfaces are dry, clean and free of oil and grease.	*	*			
Make sure that the product is clean.	X	X			
Examine the shaft seals for damage/water leakage.		X			
Make sure that the nuts and screws are tight.			*		
Make sure that the power switch operates correctly.			X		
Replace the gear oil.				O	
Examine the carbon brushes for damage.					X

To clean the product



CAUTION: Make sure that no water goes into the motor or the gearbox.



CAUTION: Do not use running water to clean the product.

- Use a dry or moist cloth to clean the product.
- Remove blockage from all air openings. A blocked air intake decreases the performance of the product and can cause the motor to become too hot.
- Clean and lubricate the spindle shaft thread.

To do maintenance of the diamond drill bit

- Make sure that the diamond tools segments are sharp. Sharpen blunt diamond segments with a SiC grind stone.
- Make sure that there is no vibration in the drill bit. If there is vibration in the drill bit, the diamond segments can come loose.
- Make sure that the diamond segments are sufficiently larger than the inner and outer diameter of the drill bit tube.
- Lubricate the drill bit thread with water resistant grease. This makes it easy to loosen the tool.
- Make sure that the radial run out at the diamond segments of the drill bit is not more than 1 mm.

To replace the gear oil



CAUTION: If there is gear oil leakage, stop the product and speak to an approved service center. The gear becomes damaged if the gear oil level is not sufficient.

- Let an approved Husqvarna service center replace the gear oil.

To examine the water connection

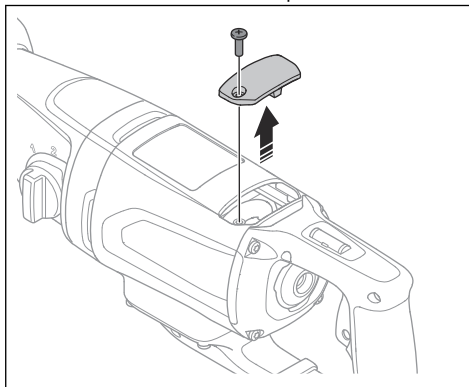


CAUTION: If there is a leakage of water from the water connection ring, the shaft seals must be replaced immediately.

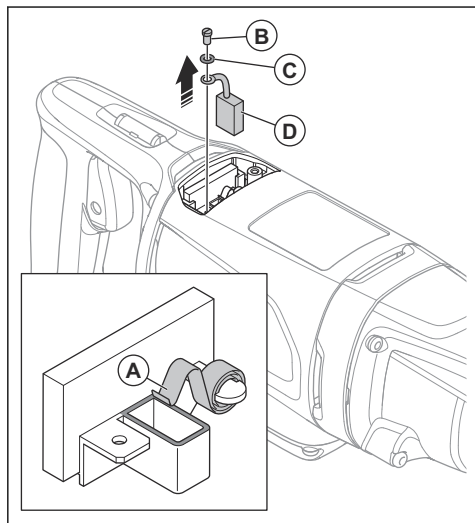
- Let an approved Husqvarna service center repair the water connection.

To do a check of the carbon brushes

1. Disconnect the product from the power source.
2. Remove the screw and the inspection cover.

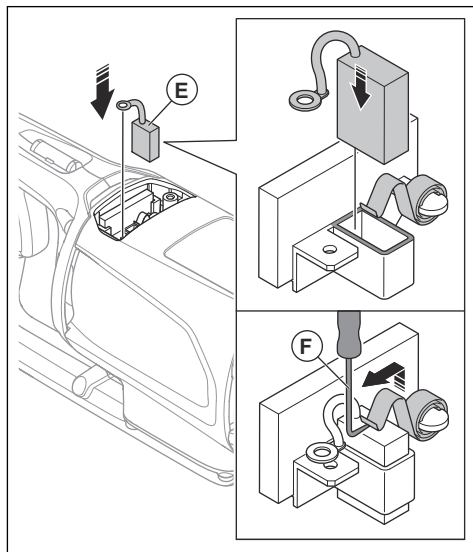


3. Lift the brush retainer spring (A) to one side. Make sure that it is held in place by the edge of the carbon brush holder.

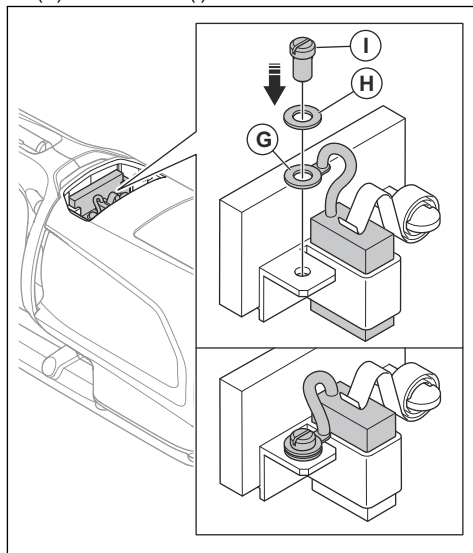


4. Remove the screw (B) and the washer (C).
5. Pull out the carbon brush (D).
6. Clean the carbon brush holder with compressed air or a brush.
7. Clean carbon brush with compressed air or a brush.
8. Do a check of the carbon brush. Replace it if it is damaged or worn. Refer to *To replace the carbon brushes on page 18*.

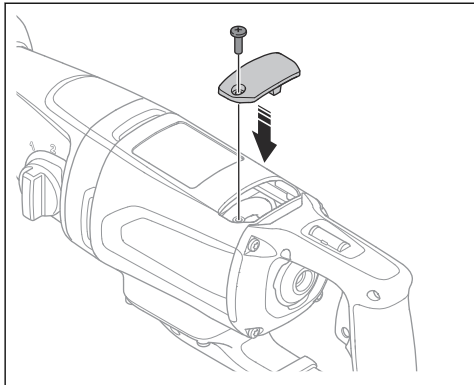
9. Install the carbon brush (E) in the carbon brush holder.



10. Use a picker (F) to lift the brush retainer spring to the correct position.
11. Install the carbon brush connection (G), the washer (H) and the screw (I).



12. Install the screw and the inspection cover.



13. Do the same procedure for the carbon brush on the opposite side of the product.

To replace the carbon brushes

1. Remove the carbon brush. Refer to *To do a check of the carbon brushes on page 16*.
2. Install a new carbon brush. Refer to *To do a check of the carbon brushes on page 16*.
3. Operate the product at idle speed for 10 minutes.

Troubleshooting schedule

If you cannot find a solution to your problems in this operator's manual, speak to your Husqvarna service agent.

Problem	Steps to do immediately	Possible cause	Solution
The product does not start when the power switch is pushed.	Release the power switch.	If there is a red light on the PRCD, the current is disconnected.	Push the "RESET" button on the PRCD. If the PRCD disconnects the current again, speak to an approved Husqvarna service center.
The product stops.		There is a fault with the current source. The current is disconnected by the Elgard™ function.	Do a check of the current source.
		The drill bit is blocked. The current is disconnected by the Elgard™ function.	Turn the drill bit right and left, use a wrench. Carefully remove the product from the drill hole.
		Too high load causes overload of the motor. The current is disconnected by the Elgard™ function.	Make sure that the drill bit can be turned easily in the drill hole.
		If there is a red light on the PRCD, the current is disconnected.	Push the "RESET" button on the PRCD. If the PRCD disconnects the current again, speak to an approved Husqvarna service center.
		The diamond segments are blunt.	Sharpen the diamond segments with a SiC grind stone.
The product does not continue into the surface, decreases in speed and stops.		The water pressure is too low.	Increase the water pressure. Refer to <i>Technical data on page 21</i> .
Unwanted material collects around the hole during operation.		There are much vibration in the product during the operation.	Use correct load when you operate the product.
The diamond segments on the drill bit are pulled out of their bond.		The seals are worn out and must be replaced.	Speak to an approved Husqvarna service center.
There is a leakage of gear oil.		The shaft seals are defect.	Speak to an approved Husqvarna service center. Make sure to always use clean water.
There is a leakage of water from the hole on the water connection ring.			
The product does not operate smoothly.	Decrease the force.	Too high load causes overload of the motor.	Use less force when you drill.

Transportation, storage and disposal

Transportation and storage

- Pull out the plug from the power outlet before transportation or storage of the product.
- Remove the drill bit before transportation or storage of the product. This is to prevent damage to the product and the drill bits.

- Keep the product in a locked area to prevent access for children or persons that are not approved.
- Keep the product in a dry and frost-free area.
- Safely attach the product during transportation to prevent damage and accidents.

Disposal of the product



The symbol means that the product is not domestic waste. Recycle it through your local collection system for electrical and electronic equipment. This contributes to proper end of life waste management.

Contact local authorities, domestic waste services, your Husqvarna servicing dealer or retailer for information.

Incorrect disposal may have potential negative effects on the environment and human health, due to the potential presence of hazardous substances.

Technical data

Technical data

Motor		
Electrical motor	Single-phase	
Rated voltage, V	100-120, 110, 220-240	
Rated power, W	2000	
Rated output, W	1340	
Rated frequency, Hz	50-60	
Rated current, A		
100-120V (US, JP)	15	
100-120V (UK, Ireland)	19	
220-240V	9.3	
PRCD current, mA		
100-120V (US, JP)	6	
220-240V	10	
Drill bit		
Max. drill diameter in concrete, mm/in.	80/3.1	
Min. drill diameter in concrete, mm/in.	30/1.2	
Weight, kg/lb	6.4/14.1	
Water cooling		
Water coupling	Gardena/Geka	
Maximum water pressure, bar	3	
Tool connection		
Spindle thread, JP/SE/RoW	A-Rod/CRI 28/1 1/4", G 1/2"	
Operating data		
Gear	1	2
Speed spindle, idle, full load, rpm	800	1700
Speed spindle, idle, no load, rpm	1250	2600
Drill diameter in concrete, mm/in.	50-80/2.4-3.1	30-60/1.2-2.4
Recommended water volume, l/min	1.7-2.4	1.1-1.6

Noise and vibration emissions

Note: The declared vibration total value and declared noise emission values have been measured in accordance with a standard test method and can be used for comparing one tool with another. The declared vibration total value and declared noise emission values can also be used in a preliminary assessment of exposure.

Noise emission ²	
Sound pressure level, dB (A)	92
Sound power level, L _{WA} dB (A)	100
Vibration levels when drilling into concrete, a _{h,DD} ³	
Main handle, m/s ²	4.1
Auxiliary handle, m/s ²	2.6

Embedded connectivity

Note: This part is applicable only for products supplied with embedded connectivity.

BLE technology radio spectrum	
Frequency bands for the tool, GHz	2.402-2.480
Maximum radio-frequency power transmitted, dBm/mW	4/2.5

Accessories

Recommended dust extractor capacity

Technical data for dust extractors are not conclusively describing actual performance over time between

different dust extractors. For Husqvarna products objective data are available at www.husqvarnacp.com.

Min. air flow at turbine, m ³ /h /CFM	240/141
Min. vacuum, kPa/psi	22/3.6
Dust extractor attachment, mm/in.	51/2

² Noise emission in the environment measured as sound pressure according to EN 62841-2-1. Expected measurement uncertainty 5 dB(A).

³ Vibration level according to EN 62841-2-1. Reported data for vibration level has a typical statistical dispersion (standard deviation) of 1,5 m/s²

Service

Approved service center

To find your nearest Husqvarna Construction Products approved service center, go to the web site www.husqvarnacp.com.

Declaration of Conformity

EU Declaration of Conformity

We, **Husqvarna AB**, SE-561 82 Huskvarna, Sweden, tel:
+46-36-146500, declare on our sole responsibility that
the product:

Description	Hand-held diamond core drill
Brand	Husqvarna
Type / Model	DM 200
Identification	Serial numbers dating from 2025 and onwards

complies fully with the following EU directives and
regulations:

Directive/Regulation	Description
2006/42/EC	"relating to machinery"
2014/53/EU	"relating to radio equipment"
2011/65/EU	"relating to restriction of hazardous substances"

and that the following harmonized standards and/or
technical specifications are applied;

EN ISO 12100:2010

EN 62841-2-1:2018/A1:2022

EN 55014-1:2017

EN 61000-3-2:2014

EN 61000-3-3:2013

ETSI EN 301 489-1 V2.2.3

ETSI EN 301 489-3 V2.1.1

ETSI EN 301 489-17 V3.1.1

EN IEC 63000:2018

Partille, 2025-08-06

UK Importer:
Husqvarna UK Ltd
Preston Road, Co. Durham
DL5 6UP



Mattias Holmdahl

Senior Director, R&D Light Equipment

Husqvarna AB, Construction Division

Responsible for technical documentation

Registered trademarks

The *Bluetooth*[®] word mark and logos are registered trademarks owned by *Bluetooth SIG, inc.* and any use of such marks by Husqvarna is under license.



www.husqvarnaconstruction.com

Original instructions



1144917-26



2025-12-04