



# **Husqvarna**<sup>®</sup>



## CRT 36-26A

# Contents

Introduction.....	2	Transportation, storage and disposal.....	22
Safety.....	5	Technical data.....	25
Operation.....	9	Accessories.....	27
Maintenance.....	14	Declaration of Conformity.....	28
Troubleshooting.....	21	Trademarks.....	28

## Introduction

### Product description

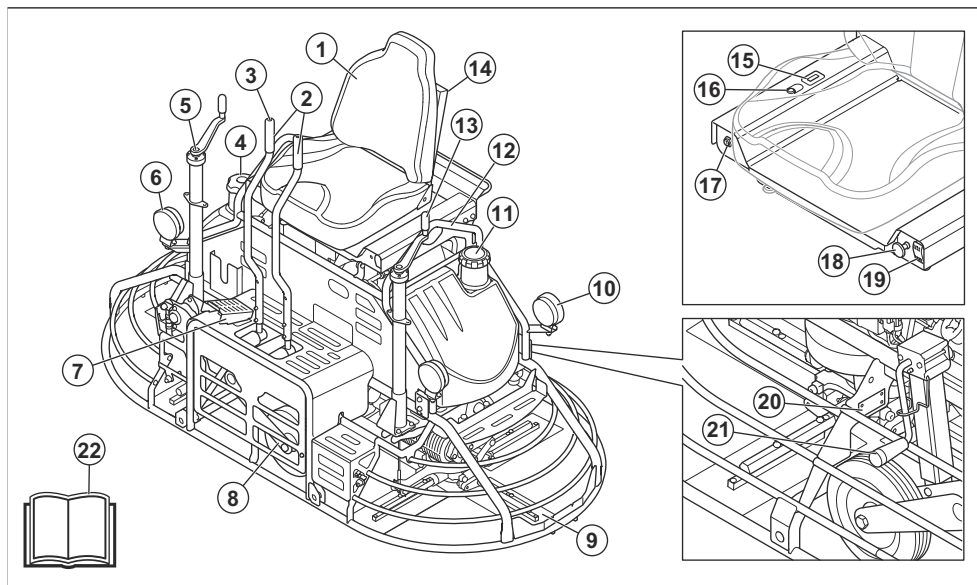
This product is a ride-on trowel, which is a concrete smoothing machine. It uses gasoline as fuel and has a 4-stroke combustion engine.

The product can be used with the optional accessory floating disc.

### Intended use

The product is for professional operation only. The product is used for the floating and burnishing curing concrete before the surface dries too much for the necessary finish. The product must only be used outdoors or in areas with sufficient airflow. Do not use the product for other tasks.

### Product overview



1. The seat with operator presence control
2. Steering controls
3. Button for retardant spray control
4. Fuel tank cap
5. Right blade pitch control
6. Front work light
7. Throttle control, foot pedal
8. Built-in transport wheels
9. Blade
10. Rear work light

11. Water and retardant tank cap
12. Lifting point, 1 on each side
13. Left blade pitch control
14. Pocket for the operator's manual
15. Hour meter
16. Oil pressure indicator
17. Ignition key
18. Choke
19. Work light switch
20. Type plate

21. Adjustment lever for the transport wheel

22. Operator's manual

## Symbols on the product



**WARNING!** This product can be dangerous and cause serious injury or death to the operator or others. Be careful and use the product correctly.



Read the manual carefully and make sure that you understand the instructions before you use the product.



Use hearing protection.



Use eye protection.



Use boots with steel toe-caps and non-slip soles.



No open flame, fire, open ignition source and smoking near the product.



Warning: Flammable material.



Stop the engine before you fill fuel.



Fuel: Unleaded gasoline with a maximum of 10% ethanol.



Risk of injury. Be careful around the drive belt.



Risk of crush injury.



Hot surface.



Keep your hands away from the blades.



Keep your feet away from the blades.



Battery acid is poisonous and can cause corrosion.



Dispose of waste batteries in accordance with local environmental regulations. The battery contains mercury (Hg), cadmium (Cd), or lead (Pb).



Lifting point.



Ignition key position OFF.



Ignition key position ON.



Ignition key position, start the engine.



Light switch.



Choke.



Tie-down bracket.



Fill point of the water tank.



Low engine oil pressure.



The location of the operator's manual on the product. The operator's manual must be kept together with the product.



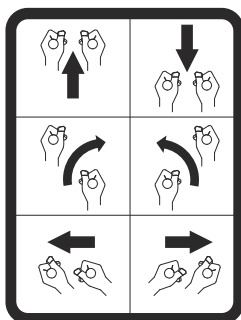
This product is in compliance with applicable EC directives.



The exhaust fumes from the engine contain carbon monoxide, an odorless, poisonous and very dangerous gas. The product must only be used outdoors or in areas with sufficient airflow.

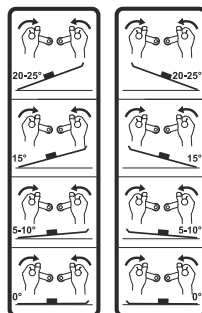
**Note:** Other symbols/decals on the product refer to special certification requirements for some markets.

### Steering control decal



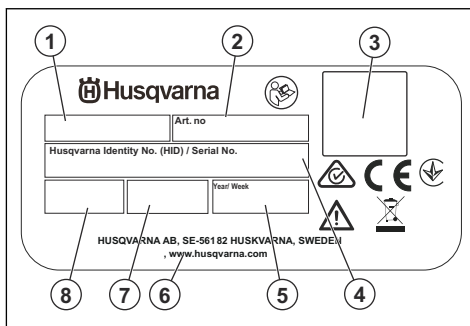
Refer to *To move the product in the correct operation pattern on page 12.*

### Blade pitch decal



Refer to *To adjust the blade pitch on page 13.*

### Type plate



1. Product type
2. Article number
3. QR code
4. Serial number
5. Production year and week
6. Manufacturer
7. Rated power
8. Weight

### Product damage

We are not responsible for damages to our product if:

- the product is incorrectly repaired.
- the product is repaired with parts that are not from the manufacturer or not approved by the manufacturer.
- the product has an accessory that is not from the manufacturer or not approved by the manufacturer.
- the product is not repaired at an approved service center or by an approved authority.

---

# Safety

---

## Safety definitions

Warnings, cautions and notes are used to point out specially important parts of the manual.



**WARNING:** Used if there is a risk of injury or death for the operator or bystanders if the instructions in the manual are not obeyed.



**CAUTION:** Used if there is a risk of damage to the product, other materials or the adjacent area if the instructions in the manual are not obeyed.

**Note:** Used to give more information that is necessary in a given situation.

## General safety instructions



**WARNING:** Read the warning instructions that follow before you use the product.

- This product is a dangerous tool if you are not careful or if you use the product incorrectly. This product can cause serious injury or death to the operator or others. Before you use the product, you must read and understand the contents of this operator's manual.
- This product is not intended for use by persons (including children) with reduced physical, sensory or mental capabilities, or lack of experience and knowledge.
- Save all warnings and instructions.
- Comply with all applicable laws and regulations.
- The operator and the employer of the operator must know and prevent the risks during operation of the product.
- Do not let a person operate the product unless they read and understand the contents of the operator's manual.
- Do not operate the product unless you receive training before use. Make sure that all operators receive training.
- Do not let a child operate the product.
- Only let approved persons operate the product.
- The operator is responsible for accidents that occur to other persons or their property.
- Do not use the product if you are tired, ill, or under the influence of alcohol, drugs or medicine.
- Always be careful and use your common sense.
- This product produces an electromagnetic field during operation. This field can under some circumstances interfere with active or passive medical implants. To decrease the risk of serious injury or death, we recommend persons with medical implants to speak to their physician and the medical implant manufacturer before operating this product.
- Keep the product clean. Make sure that you can clearly read signs and decals.
- Do not use the product if it is damaged.
- Do not make modifications to this product.
- Do not operate the product if it is possible that other persons have made modifications to the product.

## Safety instructions for operation



**WARNING:** Read the warning instructions that follow before you use the product.

- Make sure that you know how to stop the engine quickly in an emergency.
- The operator must have the physical strength that is necessary to operate the product safely.
- Do not operate the product without all protective covers installed.
- Use personal protective equipment. Refer to *Personal protective equipment on page 7*.
- Wet concrete can cause chemical burns. Use protective clothing and remove wet concrete immediately if you get it on your skin.
- Always look down and behind you before and while you move in reverse. Look out for large and small obstacles.
- Decrease the speed before you turn around a corner.
- Keep children, bystanders and animals away from the work area and at a safe distance from the product during operation.
- Make sure that only approved persons are in the work area.
- Keep the work area clean and bright.
- Make sure that you are in a safe and stable position during operation. Stay in the seat in a forward direction. Keep your feet on the control deck and your hands on the controls.
- Make sure that there is no risk that you or the product can fall from a height.
- Make sure that there is no grease or oil on the handle, seat and foot throttle control.
- Do not use the product in areas where fire or explosions can occur.
- The product can cause objects to eject at high speed. Make sure that all persons in the work

area use approved personal protective equipment. Remove loose objects from the work area.

- Before you go away from the product, stop the engine and make sure that there is no risk of accidental start.
- Make sure that clothes, long hair and jewelry do not get caught in moving parts.
- Keep your hands and feet away from the blades.
- Do not hit the product.
- Do not operate the product near electrical cables. The product does not have electrical insulation and injury or death can occur.
- Before you operate the product, find out if there are hidden wires, cables and pipes in the work area. If the product hits a hidden object, stop the engine immediately and examine the product and the object. Do not start to operate the product again until you know that it is safe to continue.
- Do not operate the product if the protection cage or other elements are damaged.
- Make sure that only the operator is on the product during the operation. Do not let other persons be on the product during the operation.

### Vibration safety



**WARNING:** Read the warning instructions that follow before you use the product.

- During operation of the product, vibrations go from the product to the operator. Regular and frequent operation of the product can cause or increase the degree of injuries to the operator. Injuries can occur in fingers, hands, wrists, arms, shoulders, and/or nerves and blood supply or other body parts. The injuries can be debilitating and/or permanent, and can increase gradually during weeks, months or years. Possible injuries include damage to the blood circulation system, the nervous system, joints, and other body structures.
- Symptoms can occur during operation of the product or at other times. If you have symptoms and continue to operate the product, the symptoms can increase or become permanent. If these or other symptoms occur, get medical aid:
  - Numbness, loss of feeling, tingling, pricking, pain, burning, throbbing, stiffness, clumsiness, loss of strength, changes in skin color or condition.
- Symptoms can increase in cold temperatures. Use warm clothing and keep your hands warm and dry when you operate the product in cold environments.
- Do maintenance on and operate the product as given in the operator's manual, to keep a correct vibration level.
- Let the product do the work. Do not push the product with force. Hold the product at the handles lightly, but make sure that you control the product and

operate it safely. Do not push the handles into the end stops more than necessary.

- Keep your hands on the handles only. Keep all other body parts away from the product.
- Stop the product immediately if strong vibrations suddenly occurs. Do not continue the operation before the cause of the increased vibrations is removed.

### Dust safety



**WARNING:** Read the warning instructions that follow before you use the product.

- Operation of the product can cause dust in the air. Dust can cause serious injury and permanent health problems. Silica dust is regulated as harmful by several authorities. These are examples of such health problems:
  - The fatal lung diseases chronic bronchitis, silicosis and pulmonary fibrosis
  - Cancer
  - Birth defects
  - Skin inflammation
- Use correct equipment to decrease the quantity of dust and fumes in the air and to decrease dust on work equipment, surfaces, clothing and body parts. Examples of controls are dust collection systems and water sprays to bind dust. Decrease dust at the source where possible. Make sure that the equipment is correctly installed and used and that regular maintenance is done.
- Use approved respiratory protection. Make sure that the respiratory protection is applicable for the dangerous materials in the work area.
- Make sure that the airflow is sufficient in the work area.
- If it is possible, point the exhaust of the product where it cannot cause dust to go into the air.

### Exhaust fumes safety



**WARNING:** Read the warning instructions that follow before you use the product.

- The exhaust fumes from the engine contain carbon monoxide which is an odourless, poisonous and very dangerous gas. To breathe carbon monoxide can cause death. Because carbon monoxide is odourless and cannot be seen, it is not possible to sense it. A symptom of carbon monoxide poisoning is dizziness, but it is possible that a person becomes unconscious without warning if the quantity or concentration of carbon monoxide is sufficient.
- Exhaust fumes also contain unburned hydrocarbons including benzene. Long-term inhalation can cause health problems.

- Exhaust fumes that you can see or smell also contain carbon monoxide.
- Do not use a combustion engine product indoors or in areas that do not have sufficient airflow.
- Do not breathe the exhaust fumes.
- Make sure that the airflow in the work area is sufficient. This is very important when you operate the product in trenches or other small work areas where exhaust fumes can easily collect.

## Noise safety



**WARNING:** Read the warning instructions that follow before you use the product.

- High noise levels and long-term exposure to noise can cause noise-induced hearing loss.
- To keep the noise level to a minimum, do maintenance on and operate the product as given in the operator's manual.
- Examine the muffler for damages. Make sure that the muffler is correctly attached to the product.
- Use approved hearing protection while you operate the product.
- Listen for warning signals and voices when you use hearing protection. Remove the hearing protection when the product is stopped, unless hearing protection is necessary for the noise level in the work area.

## Personal protective equipment



**WARNING:** Read the warning instructions that follow before you use the product.

- Always use approved personal protective equipment when you operate the product. Personal protective equipment cannot fully prevent injury but it decreases the degree of injury if an accident does occur. Let your dealer help you select the correct personal protective equipment.
- Regularly do a check of the condition of the personal protective equipment.
- Use an approved protective helmet.
- Use approved hearing protection.
- Use approved respiratory protection.
- Use approved eye protection with side protection.
- Use protective gloves.
- Use boots with steel toe-cap and non-slip sole.
- Use approved work clothing or equivalent close-fitting clothing that has long sleeves and long legs.

## Fire extinguisher

- Keep a fire extinguisher near during operation.
- Use a powder fire extinguisher of "ABE" class or a carbon dioxide fire extinguisher of "BE" type.

## Safety devices on the product



**WARNING:** Read the warning instructions that follow before you use the product.

- Do not use a product with safety devices that are damaged or do not operate correctly.
- Do a check of the safety devices regularly. If the safety devices are damaged or do not operate correctly, speak to your Husqvarna servicing dealer.
- Do not make modifications to safety devices.

## Muffler

The muffler reduces the noise levels and directs exhaust fumes away from the operator.

Do not use the product if the muffler is missing or damaged. A damaged or missing muffler may increase the noise level and the risk of fire.



**WARNING:** The muffler becomes very hot during and after use and when the engine operates at idle speed. To avoid burn injuries, do not touch the hot muffler. Be careful near flammable materials and/or fumes to prevent fire. Use protective gloves to prevent burn injuries.

## To do a check of the muffler

- Examine the muffler regularly to make sure that it is attached correctly and not damaged.

## Operator presence control

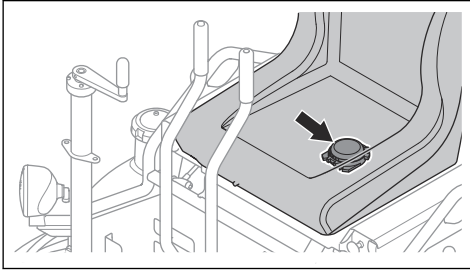
The OPC engages when the operator lifts from the seat. The drive to the blades stops but the engine is on at idle speed. If the throttle control is pushed when the operator is not in the seat, the engine will stop.

## To do a check of the operator presence control



**WARNING:** Make sure that the operator does not step down from the product during this check. An operator must be on the product to stop it quickly if there is an emergency.

1. Make sure that the operator presence control switch is in position.



2. Lift a short distance from the seat.
3. Push the throttle control.
4. Make sure that the engine stops.
5. If the operator presence control does not operate correctly, let an approved service center repair it.

#### To do a check of the ignition lock

- Start and stop the engine to do a check of the ignition lock. See *To start the product on page 11* and *To stop the product on page 14*.
- Make sure that the engine starts when you turn the ignition key to START.
- Make sure that the engine stops immediately when you turn the ignition key to OFF.

#### Fuel safety



**WARNING:** Read the warning instructions that follow before you use the product.

- Fuel is flammable and the fumes are explosive. Be careful with fuel to prevent injury, fire and explosion.
- Do not breathe in the fuel fumes. The fuel fumes are poisonous and can cause injury. Make sure that the airflow is sufficient.
- Do not remove the fuel tank cap or fill the fuel tank when the engine is on.
- Make sure that the engine is cool before you refuel.
- Do not fill fuel in an indoor area. Insufficient airflow can cause injury or death because of asphyxiation or carbon monoxide poisoning.
- Do not smoke near the fuel or the engine.
- Do not put hot objects near the fuel or the engine.
- Do not fill fuel near sparks or flames.
- Before you refuel, open the fuel tank cap slowly and release the pressure carefully.
- Fuel on your skin can cause injury. If you get fuel on your skin, use soap and water to remove the fuel.
- If you spill fuel on your clothing, change clothing immediately.
- Do not fill the fuel tank fully. Heat causes the fuel to expand. Keep a space at the top of the fuel tank.

- Tighten the fuel tank cap fully. If the fuel tank cap is not tightened, there is a risk of fire.
- Before you start the product, move the product to a minimum of 3 m/10 ft from where you refueled.
- Do not start the product if there is fuel or engine oil on the product. Remove the unwanted fuel and engine oil and let the product dry before you start the engine.
- Examine the engine for leaks regularly. If there are leaks in the fuel system, do not start the engine until the leaks are repaired.
- Do not use your fingers to examine the engine for leaks.
- Keep fuel in approved containers only.
- When the product and fuel is in storage, make sure that fuel and fuel fumes cannot cause damage.
- Drain the fuel in an approved container outdoors and away from sparks and flames.

#### Battery safety



**WARNING:** A damaged battery can cause an explosion and cause injury. If the battery has a deformation or is damaged, speak to an Husqvarna servicing dealer.



**WARNING:** Read the warning instructions that follow before you use the product.

- Use protective glasses when you are near batteries.
- Do not wear watches, jewelry or other metal objects near the battery.
- Keep the battery out of reach for children.
- Charge the battery in a space with good airflow.
- Keep flammable materials at a minimum clearance of 1 m/6.5 ft when you charge the battery.
- Discard replaced batteries. Refer to *Disposal on page 24*.
- Explosive gases can come from the battery. Do not smoke near the battery. Keep the battery away from open flames and sparks.

#### Safety instructions for operation near edges



**WARNING:** Read the warning instructions that follow before you use the product.

- There is a risk that the product falls when you operate it near an edge. Always keep a minimum of 80% of the product on a surface that is sufficiently stable to hold the product weight.
- If the product falls, stop the engine before you lift the product to a surface that is sufficiently stable. Do a check of the product, the safety frame, the OPC, the blade shafts and the blades. Replace all damaged



parts before you operate the product. Refer to *To lift the product on page 22*.

## Safety instructions for maintenance



**WARNING:** Read the warning instructions that follow before you use the product.

- If the maintenance is not done correctly and regularly, the risk of injury and damage to the product increases.
- Use personal protective equipment. Refer to *Personal protective equipment on page 7*.
- Stop the engine and make sure that all parts of the product are cool before you do the maintenance.
- Clean the product to remove dangerous material before you do the maintenance.
- Disconnect the spark plug cap before you do the maintenance.
- Worn blades can have sharp edges. Use protective gloves and be careful around the blades.
- The exhaust fumes from the engine are hot and can contain sparks. Do not operate the product in indoor areas or near flammable material.
- Do not do modifications to the product. Modifications that are not approved by the manufacturer, can cause serious injury or death.
- Always use original accessories and spare parts. Accessories and spare parts that are not approved by the manufacturer, can cause serious injury or death.
- Replace damaged, worn or broken parts.
- Only do the maintenance as given in this operator's manual. Let an approved service center do all other servicing.
- Remove all tools from the product before you start the engine after maintenance. Loose tools or tools attached to rotating parts can eject and cause injury.
- After maintenance, make sure that the vibration level of the product is correct. If the vibration level is not correct, speak to an approved service center.
- Let an approved service center do servicing on the product regularly.

## Operation

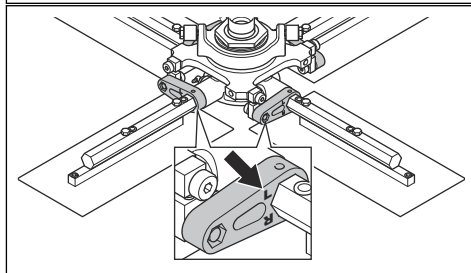
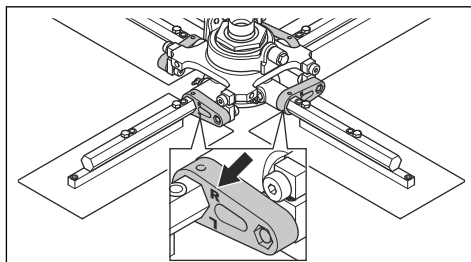
### Introduction



**WARNING:** Read and understand the safety chapter before you use the product.

### To do before you operate the product

- Read the operator's manual carefully and make sure that you understand the instructions.
- Read the engine manual that is supplied by the engine manufacturer.
- Examine the product and all components for damage. Do not operate the product if there is visual damage.
- Make sure that the horizontal blade pitch linkages are correctly assembled. From the operator's position in the seat, the right rotor has the letter R at the top of the blade pitch linkage. The left rotor has the letter L.



- Do the daily maintenance. Refer to *Maintenance schedule on page 14*.

## To give training to new operators of the product



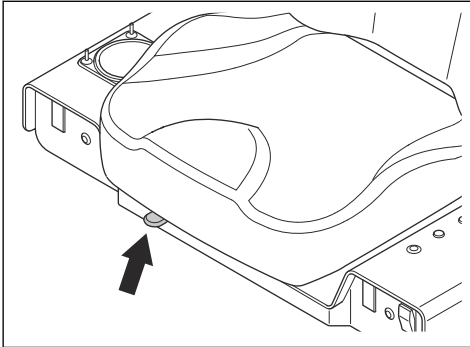
**WARNING:** This product can cause serious injury or death to the operator or others. New operators must know all controls and learn how to operate the product safely before operation.

1. Show new operators the correct operator position in the seat.
2. Show them the functions of the steering controls and how to start the product.
3. Let them learn how to steer the product on a hard and slightly wet concrete surface.
  - a) Increase the blade pitch to 6 mm/¼ in.
  - b) Set the throttle control to maximum power for the best steering control.
  - c) Start stationary and then move the product straight forward and make 180° turns.

## To adjust the seat

Adjust the seat for a better work position and a safer operation.

1. Sit in the seat.
2. Push the seat adjustment lever to the left.



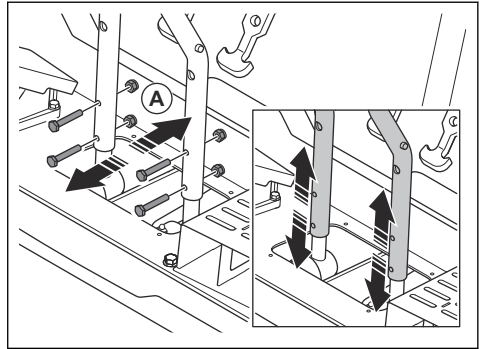
3. Move the seat to a correct position.
4. Release the seat adjustment lever.

## To adjust the positions of the steering controls

There are 3 positions for the steering controls. The stroke is longer with the steering controls in the top position.

1. Stop the engine.

2. Remove the 4 bolts and 4 nuts (A).



3. Set the steering controls in 1 of the 3 positions.
4. Install the 4 bolts and 4 nuts.

## To do a run-in of the gearboxes

- During the first 2–4 hours of operation, operate the engine at ½ throttle.



**CAUTION:** There is a risk of damage to the gearboxes if you operate the engine at full throttle during the run-in period.

## To install floating discs

Floating discs can only be used on a product that has finishing blades installed.



**CAUTION:** Make sure that the floating discs are correctly installed before you operate the product. Incorrectly installed floating discs do not give a smooth result.

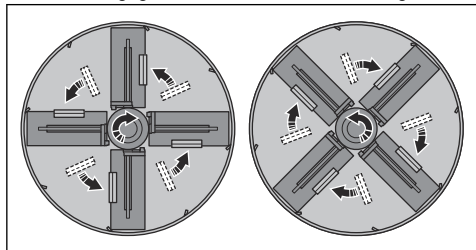


**CAUTION:** Remove the floating discs before you lift the product. The floating discs can fall and become damaged when you lift the product with lifting equipment. Refer to *To lift the product* on page 22.

For correct floating discs, speak to your Husqvarna dealer or service agent.

1. Stop the engine and remove the ignition key.
2. Lift the product with lifting equipment. Refer to *To lift the product* on page 22.
3. Put supports below the frame of the product to keep the product stable while it is lifted.
4. Align the center of the blade assemblies with the center of the floating discs.
5. Set the blade pitch to 0°.

6. Turn the left floating disc counterclockwise until the blades engage in the brackets on the floating disc.



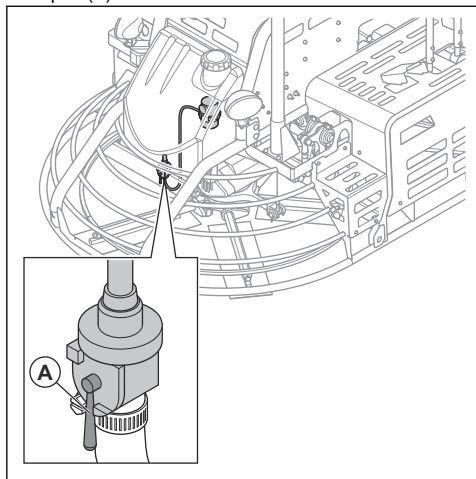
7. Turn the right floating disc clockwise until the blades engage in the brackets on the floating disc.

**Note:** Right and left is as seen from the operator's position in the seat.

8. Make sure that the floating discs are locked into position.
9. Increase the blade pitch a small distance to lock the blades in the floating disc brackets. Refer to *To adjust the blade pitch on page 13*.

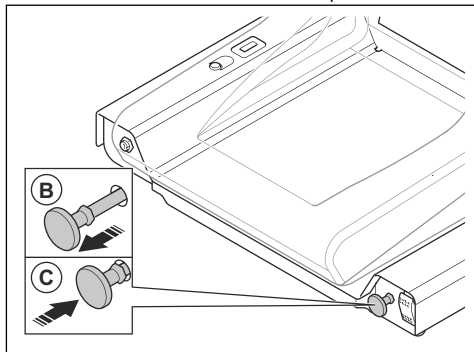
## To start the product

1. Open (A) the fuel filter.



2. Sit in the operator's seat.

3. Set the choke control in the correct position.



- a) If the engine is cold, close the choke (B).
- b) If the engine is warm or the ambient temperature is high, open the choke (C).
4. Turn the ignition key to the start position and hold it in that position until the engine starts.
  - a) When the engine starts, immediately release the ignition key.
  - b) If the engine does not start in 5 seconds, release the ignition key and wait 10 seconds before you try again.
5. Let the engine become warm before you operate the product.

## Operation modes



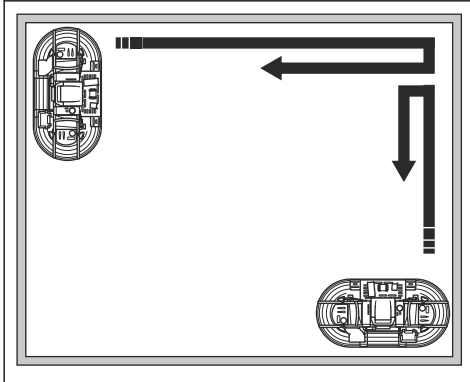
**CAUTION:** Look for loose stones and remove them from the concrete surface before operation. Loose stones can make marks that are not easy to remove from the concrete surface.

The floating operation removes dents on the concrete surface. Make sure that the concrete surface is sufficiently hard before the floating operation. Make a step on the surface and make sure that the depth of the shoe mark is less than 3 mm/0.12 in.

When the floating operation is completed, the concrete surface is prepared for the troweling operation. The troweling operation increases the density of the concrete surface and makes it smooth and hard.

## To move the product in the correct operation pattern

- Move the product straight forward across the concrete surface.



- During floating operation: Start the first floating pass 90° from the screeding pass to remove the imperfections left by the screeds. Always cross the next few passes that are required to get a flat floor. At the end of the concrete surface, move the product to the side and then move rearward to the opposite end. Make sure that there is an overlap on the pass that has received treatment. The overlap must be a minimum of  $\frac{1}{2}$  the diameter of a blade assembly. Turn the product slowly and carefully and only when you operate near objects, for example pipes.



**CAUTION:** Do not turn the product during floating operation unless it is necessary. This can move the wet concrete and cause dents, holes and damages on the concrete surface.

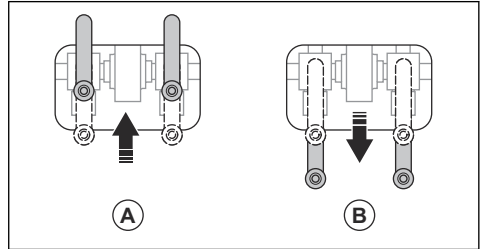
- During troweling operation: At the end of the concrete surface, turn 180° and move the product straight forward to the opposite end. Make sure that there is an overlap of a minimum of  $\frac{1}{2}$  the diameter of a blade assembly.

## To move the product with steering controls

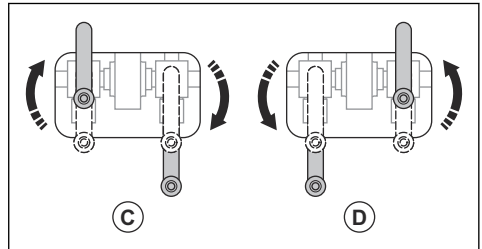


**CAUTION:** Do not push or pull the steering controls quickly or with force. This causes damage to the steering controls and can cause the product to shake and cause damage to the surface.

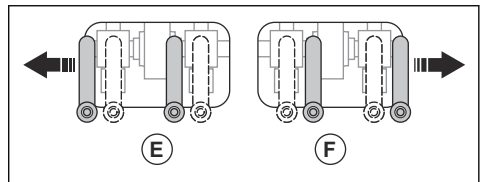
- A: To move the product forward, push the steering controls forward.



- B: To move the product rearward, pull the steering controls rearward.
- C: To turn clockwise, push the left steering control forward and pull the right steering control rearward.



- D: To turn counterclockwise, push the right steering control forward and pull the left steering control rearward.
- E: To move to the left, push the steering controls to the left.

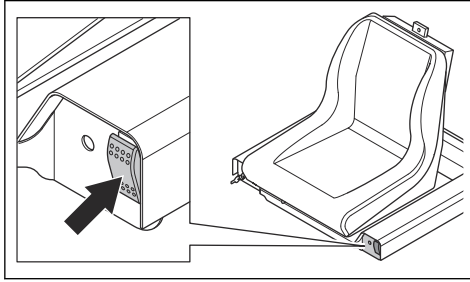


- F: To move to the right, push the steering controls to the right.

## To operate the work lights

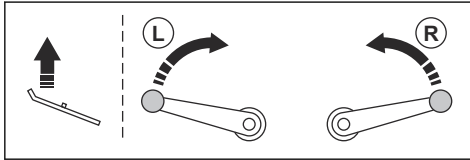
The product has 2 work lights at the front and 2 work lights at the rear.

- Push the work light switch to make the work lights come on and go off.

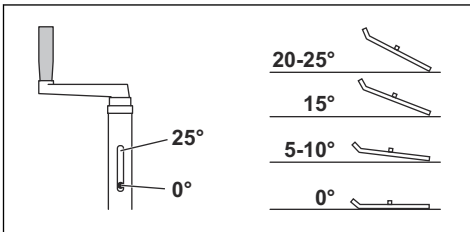
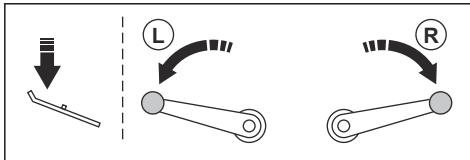


## To adjust the blade pitch

1. Set the blade pitch on the left side of the product and then set the same blade pitch on the right side of the product.
  - a) To increase the blade pitch, turn the left blade pitch control counterclockwise and the right blade pitch control clockwise.



- b) To decrease the blade pitch, turn the left blade pitch control clockwise and the right blade pitch control counterclockwise.



## Recommended blade pitch on different concrete surface conditions

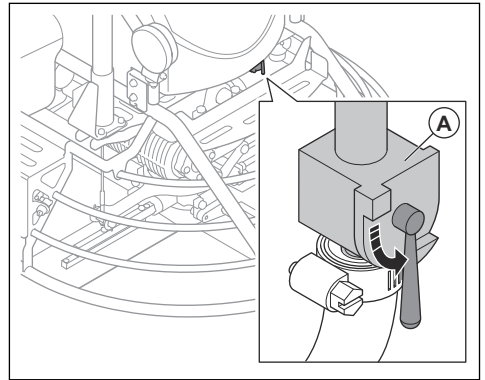
Concrete surface condition	Recommended blade pitch
Wet	Flat, 0°
Wet to plastic	Small pitch, 5-10°

Concrete surface condition	Recommended blade pitch
Not fully hard	Moderate pitch, 15°
Hard	Maximum pitch, 20-25°

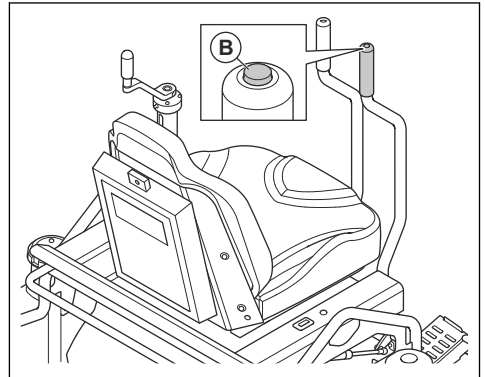
## To use the water and retardant spray system

The retardant spray system keeps the concrete sufficiently wet during the operation. Make sure that the ambient temperature is more than 0 °C/32 °F before you use the retardant spray system.

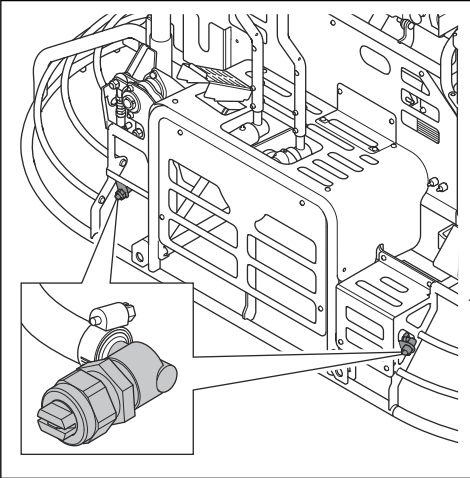
1. Fill the water tank with clean water or water-based retardant.
2. Open the valve (A).



3. Push and hold the retardant spray control (B) to start the water pump.



The water or water-based retardant sprays from the 2 nozzles at the front of the product.



To stop the product

- 1. Put the steering controls in the neutral position.
- 2. Release the throttle control.
- 3. Turn the ignition key to the OFF position. The engine stops.

Maintenance

Introduction



**WARNING:** Read and understand the safety chapter before you do maintenance on the product.

For all servicing and repair work on the product, special training is necessary. We guarantee that professional repairs and servicing is available. If your dealer is not a service agent, speak to them for information about the nearest service agent.

For spare parts, speak to your Husqvarna dealer or service agent.

Maintenance schedule

- \* = General maintenance done by the operator. The instructions are not given in this operator's manual.
- X = The instructions are given in this operator's manual.
- O = Refer to the engine manual for instructions.

General product maintenance	Daily	Each 20 h	Each 50 h	Each 300 h
Make sure that there are no fuel or oil leaks.	*			
Clean the product immediately after the operation.	X			
Make sure that nuts and screws are tightened.	*			
Do a check of the external parts of the product for wear and damages.	*			
Make sure that the throttle control, the movement controls and the blade pitch controls can move smoothly.	*			
Do a leakage check of the retardant spray system.	*			
Lubricate the blade shafts.	X			
Do a check of the oil level in the gearboxes.		X		
Lubricate the control linkages.		X		
Examine the V-belt for damage.			X	

General product maintenance	Daily	Each 20 h	Each 50 h	Each 300 h
Replace the oil in the gearboxes.				X

Engine maintenance	Daily	Each 100 h	Each 200 h	Each 300 h
Do a check of the fuel level.	*			
Do a check of the engine oil level each 4 hours of operation.	X			
Clean the air filter. Replace it if it is necessary.	X			
Replace the engine oil after the first 20 h of operation, then at this interval.		O		
Do a check of the fuel filter.		O		
Examine and clean the spark plug. Replace the spark plug if it is necessary.			O	
Replace the oil filter.			O	
Replace the fuel filter.				O
Replace the spark plug.				X

## To clean the product



**CAUTION:** High pressure water can cause damage to some components on the product. Only use a clean and moist cloth to clean them.

- Use only a clean and moist cloth to clean the operator's position and these components:
  - a) The seat, the steering controls, the control switches, the key switch, the indicators and the throttle control.
  - b) The foot pedal.
  - c) The fuses.
  - d) The electrical components.
- Remove concrete from the surfaces of the product after each operation before the concrete becomes hard.
- Use a high-pressure washer to remove concrete and unwanted material from the blades, the wheels and the protection ring.
- From a minimum distance of 1 m/3 ft, clean the product body with a high-pressure washer.
- Spray the hubs and the protection ring with concrete form oil or concrete release agent. This makes it easier to clean the product after the next operation.

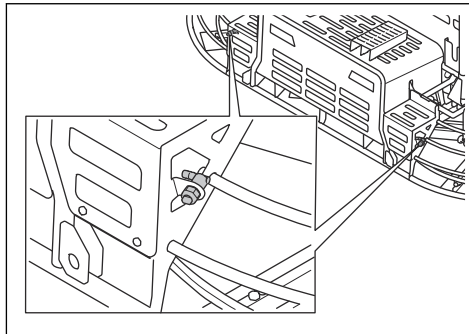


**CAUTION:** Do not spray concrete form oil or concrete release agent on the blades.

- Apply grease in all grease nipples after you clean the product. This prevents dirty water to stay in the inner surfaces of the blade hub.

## To do a check of the spray nozzles

1. Examine the spray nozzles and make sure that they are not clogged.



2. Clean the spray nozzles and the filter in the spray nozzles as necessary.
3. Carefully tighten the spray nozzles to prevent damage.
4. Examine the hoses and make sure that they are not damaged.
5. Make sure that spray nozzles spray horizontally.

## To clean or replace the air filter



**WARNING:** Use approved respiratory protection when you clean or replace the air filter. Discard damaged air filters correctly. Inhalation of the dust in the air filter may be dangerous to your health.

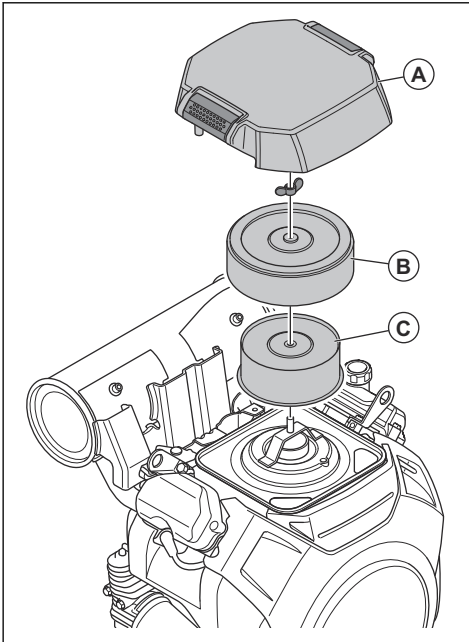


**WARNING:** Do not clean the air filter with compressed air. This causes damage to the air filter and the risk increases that you breathe the dangerous dust.



**CAUTION:** Always replace a damaged air filter or if the air filter elements can not be fully cleaned. There is a risk that dust goes into the engine and cause damage.

1. Remove the air filter cover (A).



2. Remove the foam filter element (B) and the paper filter element (C).
3. Clean the air filter housing with a brush.
4. Examine the air filter elements for damage.
5. Tap the paper filter element against a hard surface or use a vacuum cleaner to remove the particles.



**CAUTION:** Do not let the nozzle of the vacuum cleaner touch the surface of the paper filter element. Keep a small

distance. The sensitive surface of the paper filter element becomes damaged if objects touch it.

6. Clean the foam filter element with a solution of soap and water.
7. Flush the foam filter element in clean water.
8. Compress the foam filter element to remove the water and let the foam filter element dry fully.

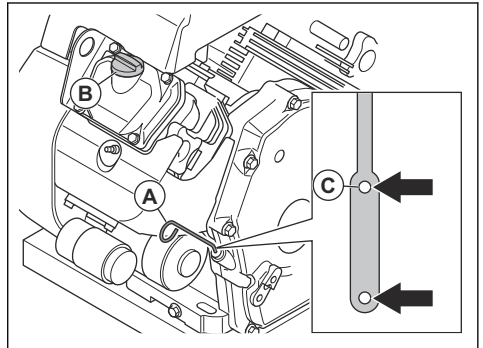


**CAUTION:** Do not put oil on the foam filter element.

9. Install the air filter in the opposite sequence.

## To do a check of the engine oil level

1. Remove the dipstick (A).



2. Clean the oil from the dipstick and put it back.
3. Remove the dipstick and examine the oil level on the dipstick. The oil level is correct when it is between the 2 marks on the dipstick.
4. If the oil level is low, remove the oil tank cap (B), fill with engine oil and do a check of the oil level again. Refer to the engine manual for the correct type of oil.
5. Make sure that the oil level is not above the top mark (C) on the dipstick.
6. Install the oil tank cap.

## To replace the engine oil

Refer to the operator's manual of the engine for information on how to replace the engine oil.

## To replace the oil filter

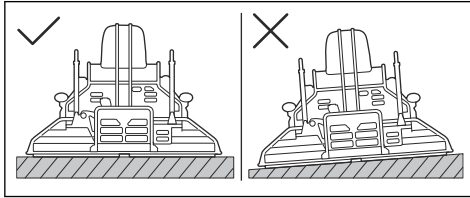
Refer to the operator's manual of the engine for information on how to replace the engine oil filter.

## To do a check of the gearbox oil level

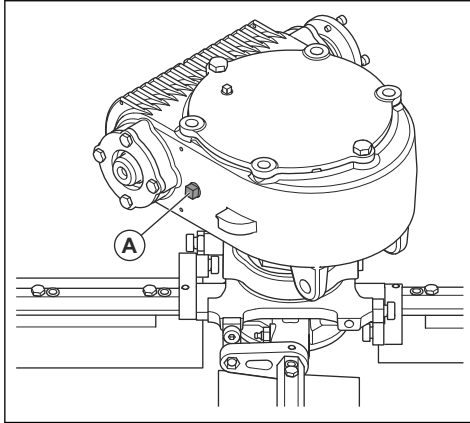
There are 2 gearboxes on the product. Do this procedure for each gearbox.



1. Put the product on a flat, level surface with the blades flat.



2. Remove 1 of the oil fill plugs (A). The gearbox has oil fill plugs on the left side and the right side.



3. Examine the gearbox oil level. The oil level is correct when it is at the bottom of the threads in the hole for the oil fill plug.
4. If the oil level is low, fill with correct type of oil. Refer to *Technical data on page 25*.



**CAUTION:** Do not fill too much and do not mix different types of gearbox oil. The gearbox can become damaged.

5. Dry the threads of the oil fill hole in the gearbox and the threads of the oil fill plug.
6. Apply LOCTITE® 565™ or equivalent to the threads of the oil fill plug.
7. Install the oil fill plug.
8. Torque the oil fill plugs to 16–20 Nm/12–15 lb-ft.

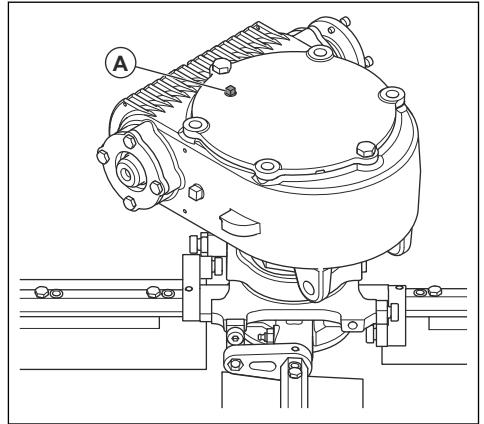
### To do a check of the pressure relief valve on the gearbox

Do this procedure each time that you do a check of the oil level in the gearbox.



**CAUTION:** If the pressure relief valve is clogged, there is a risk of oil leakage from the gearbox shaft seals.

1. Examine the pressure relief valve (A).

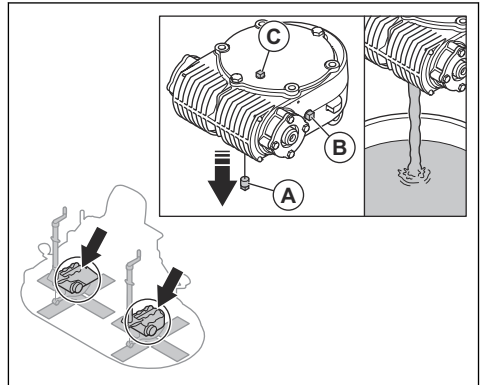


2. If it is clogged, clean it.
3. If the pressure relief valve cannot be cleaned, replace it.

### To replace the oil in the gearbox

There are 2 gearboxes on the product. Do this procedure for each gearbox.

1. Put a container with a minimum volume of 3.8 l/4.0 qts below the gearbox.
2. Do the steps that follow to drain the oil from the gearbox:
  - a) Remove the oil drain plug (A) from the gearbox and drain the gearbox fully.



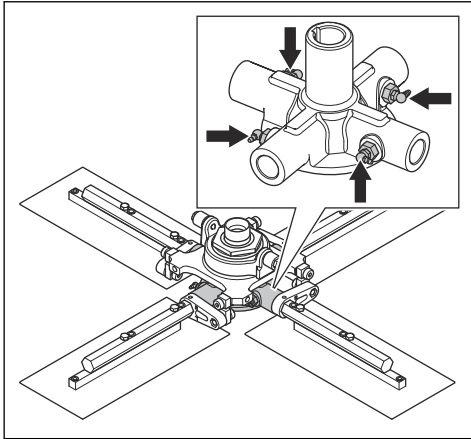
- b) Remove the oil fill plugs (B) on the gearbox to make it easier to drain the oil. The gearbox has oil fill plugs on the left side and the right side.
- c) Lift the rear of the product to let the remaining oil run out.
- d) When all oil is drained, put the product back on level ground.

3. Dry the threads of the oil drain hole in the gearbox and the threads of the oil drain plug.
4. Apply LOCTITE® 565™ or equivalent to the threads of the oil drain plug.
5. Install the oil drain plug for the gearbox (A).
6. Fill the gearbox with oil, refer to *To do a check of the gearbox oil level on page 16.*

## To lubricate the blade shafts

Use a general type of grease.

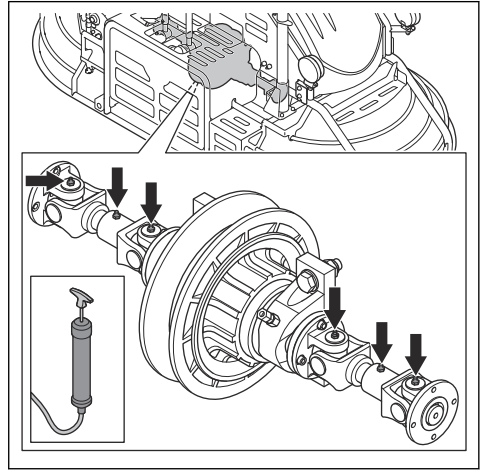
1. Put the product on a flat, level surface with the blades flat.
2. Stop the engine and disconnect the battery.
3. Increase the blade pitch to the maximum angle. This makes it easier to get access to the grease nipples.
4. Replace broken or blocked grease nipples.
5. Push grease through the grease nipples until grease comes out around the blade shafts.



## To lubricate the universal joints

- Use universal joint grease.

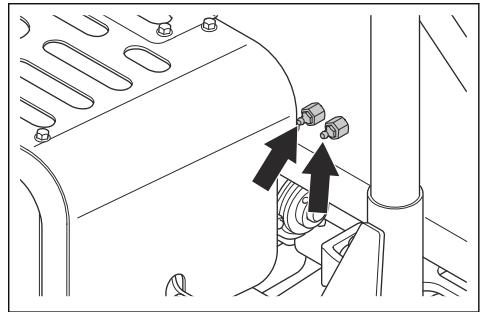
- Push grease through the grease nipples to lubricate the drive system.



- Replace broken or blocked grease nipples.

## To lubricate the drive system bearings

1. Use general grease, refer to *Technical data on page 25.*
2. Push grease through the grease nipples to lubricate the drive system bearings.



3. Replace broken or blocked grease nipples.

## To adjust the blade shafts



**WARNING:** Before you adjust the blade shafts, stop the product, let the engine become cool and disconnect the battery.

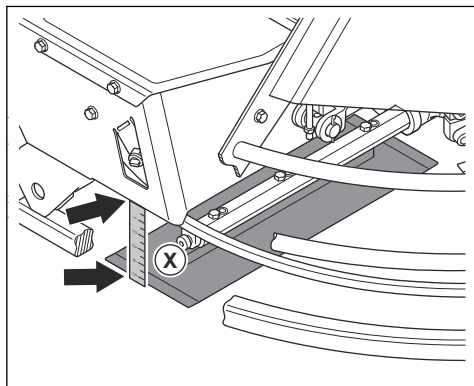


**WARNING:** Use protective gloves. The blades can cause cut injuries.

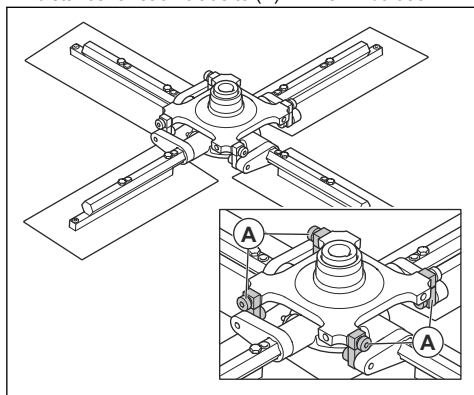
It is necessary to adjust the blade shafts in these conditions:

- A new blade shaft is installed.

- The blade assembly is disassembled.
  - The product shakes during operation.
1. Lift the product with lifting equipment until the blades do not touch the ground. Refer to *To lift the product on page 22*.
  2. Put supports below the frame of the product.
  3. Set the blade pitch to between  $\frac{1}{2}$  and full blade pitch, approximately  $12^\circ$ .
  4. There is a small play in the connection between the blade shaft and the blade pitch plate. Twist each blade until the lower end of the blade is at the lowest point of the play.
  5. Measure the distance (X) between the frame and the bottom edge of the blade. Turn the V-belt to rotate the blades to measure the distance for each blade.



6. Calculate the average distance (X) for all the blades.
7. Loosen or tighten the pitch links (A) to adjust the distance for each blade to  $(X) \pm 1.25 \text{ mm}/0.050 \text{ in.}$



## To replace the blade shaft

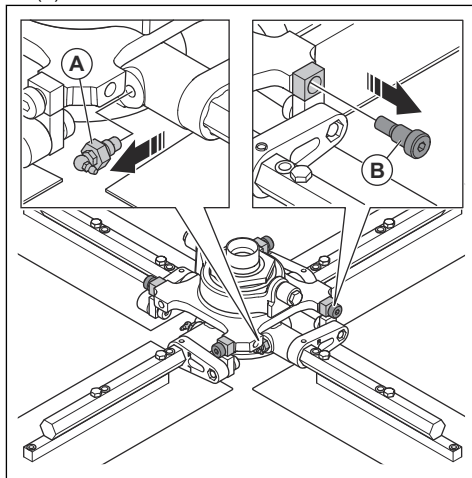


**WARNING:** Before you replace the blade shafts, stop the product, let the engine become cool and disconnect the battery.

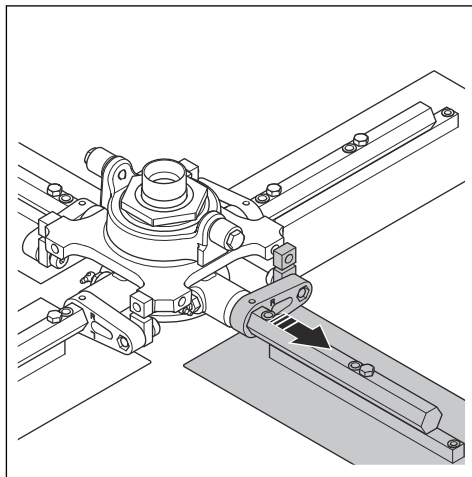


**WARNING:** Use protective gloves.

1. Get access to the blade assembly. Refer to *To replace the blades on page 20*
2. Remove the grease nipple (A) and the shoulder bolt (B).



3. Remove the blade shaft.



4. Apply grease to the threads of the screws to make the removal of the screws easier the next time.
5. Install the new blade shaft with washers and the lubricated screw.

## To replace the blades



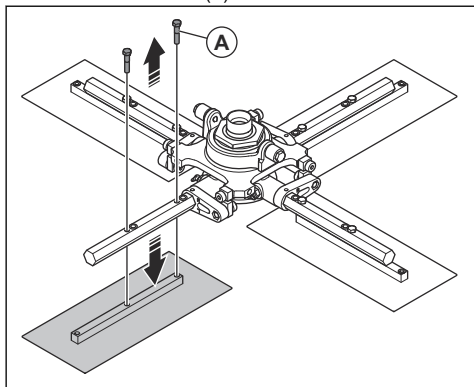
**WARNING:** Before you replace the blades, stop the product, let the engine become cool and disconnect the battery.



**WARNING:** Use protective gloves.

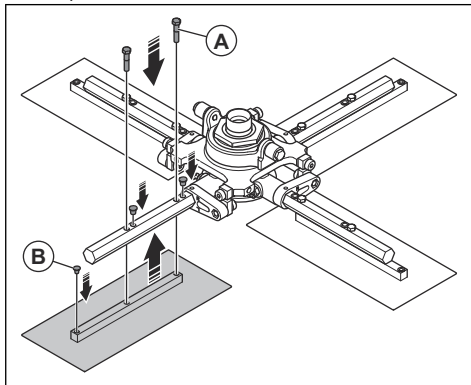
For correct blades, speak to your Husqvarna dealer or service agent.

1. Do 1 of the procedures to get access to the blade assembly:
  - a) Lift the product with lifting equipment. Refer to *To lift the product on page 22*.
  - b) Lift the product with the built-in transport wheels. Refer to *To move the product on the built-in transport wheels on page 22*.
2. Put supports below the frame of the product.
3. Remove the screws (A) and the blade.



4. Align the screw holes of the blade shaft with the screw holes of the new blade.
5. Apply grease to the threads of the screws to make the removal of the screws easier the next time.

6. Install the new blade with lubricated screws (A). Torque the blade to 27 Nm/19.9 lb-ft.



7. Put plastic plugs (B) in the remaining holes in the blade. This is to make sure that the holes are not filled with concrete when the blades are in reverse position.
8. Do this procedure for each blade.

## To charge the battery

- If the battery is not used for a long period of time, charge it fully before you use it.
- Use a battery charger that automatically adjusts the voltage. We recommend a 2-stage charger with constant voltage that automatically decreases to trickle charging when the battery is fully charged. Speak to your Husqvarna dealer for information about the correct battery charger.
- Do a trickle charging 1-2 times during the winter season when the product is in storage.

## To do an emergency start of the engine

If the battery is too weak to start the engine, you can use jumper cables to do an emergency start. This product has a 12 V system with negative ground. The product that is used for the emergency start must also have a 12 V system with negative ground.

## To connect the jumper cables

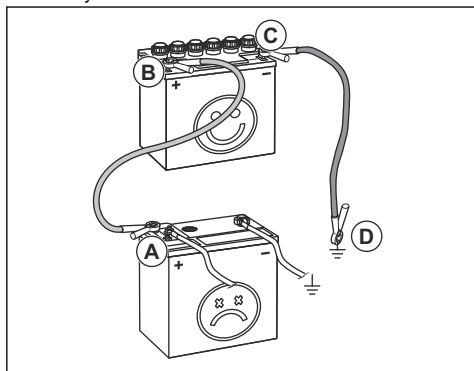


**WARNING:** Risk of explosion because of explosive gas that comes from the battery. Do not connect the negative terminal of the charged battery to or near the negative terminal of the weak battery.



**CAUTION:** Do not use the battery of your product to start other vehicles.

1. Connect one end of the red battery cable to the POSITIVE (+) battery terminal (A) on the weak battery.



2. Connect the other end of the red battery cable to the POSITIVE (+) battery terminal (B) on the charged battery.



**WARNING:** Do not let the ends of the red battery cable touch the chassis. This will cause a short circuit.

3. Connect one end of the black battery cable to the NEGATIVE (-) battery terminal (C) on the charged battery.
4. Connect the other end of the black battery cable to a CHASSIS GROUND (D), away from the fuel tank and the battery.

### To remove the jumper cables

**Note:** Remove the jumper cables in the opposite sequence to how you connect them.

1. Remove the BLACK cable from the chassis.
2. Remove the BLACK cable from the fully charged battery.
3. Remove the RED cable from the 2 batteries.

## Troubleshooting

Problem	Cause	Solution
The engine does not start.	The fuel tank is empty.	Fill the tank with correct fuel type. Refer to <i>Technical data</i> on page 25.
	The battery connections are loose or it has caused corrosion.	Do a check of the battery connections. Clean the battery connections.
	The battery is not charged.	Charge or replace the battery.
	The starter is damaged.	Replace the starter.
The engine does not start easy.	The fuel tank is empty.	Fill the tank with correct fuel type. Refer to <i>Technical data</i> on page 25.
	The battery is not charged.	Replace or charge the battery.
	The fuel filter is clogged.	Replace the fuel filter.
	The fuel circuit failure	Do a check of the fuel lines.
The product is not stable and has too much vibration.	1 or more of the trowel arms are bent or damaged.	Replace damaged trowel arms. Refer to <i>To replace the blade shaft</i> on page 19.
	1 or more of the trowel arms are out of adjustment.	Adjust the trowel arms. Refer to <i>To adjust the blade shafts</i> on page 18.
	1 or more of the trowel blades are bent or damaged.	Replace damaged trowel blades.

Problem	Cause	Solution
The range of the steering system is too wide and the product is not easy to steer.	There is a wear on the pivot bearings and rod ends.	Do a check of the pivot bearings and rod ends. Replace damaged parts.
The product does not move.	The drive belt is broken.	
	There is a vacuum between the bottom of the blades or pans and the surface of the concrete.	Replace the pitch on the blades or operate the steering system to stop the suction.
	The key in the gearbox output shaft is broken.	Replace the damaged key.

## Transportation, storage and disposal

### Transportation



**WARNING:** Be careful during transportation. The product is heavy and can cause injury or damage if it falls or moves during transportation.



**WARNING:** If optional floating discs are installed, remove them before transportation. There is a risk that the floating discs fall off and cause injury or damage.

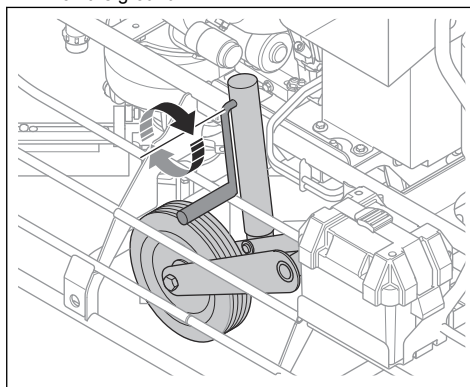
Lift the product to move it shorter distances. For longer distances, put the product on a transportation vehicle.



**CAUTION:** Do not tow the product behind a vehicle.

### To move the product on the built-in transport wheels

1. Turn the handle at the rear of the product to lower the transport wheels and lift the product. Lower the transport wheels until the blades are 76–102 mm/3–4 in. off the ground.



2. To move the product, push the top part of the frame.



**CAUTION:** The transport wheels are for short distance transportation only.

### To lift the product



**WARNING:** Make sure that the lifting equipment has the correct dimension. Refer to *Technical data* on page 25.



**WARNING:** Do not lift a damaged product. Make sure that the lifting points on each side of the seat are correctly installed and not damaged.



**WARNING:** Do not use metal hooks, chains or other lifting equipment with rough edges that can cause damage to the lifting points.



**WARNING:** Only the lifting points are sufficiently stable to hold the product. Only use the lifting points to lift the product. Do not attach the lifting equipment to the protection frame or other parts of the product. The product can fall and cause injury and damage.

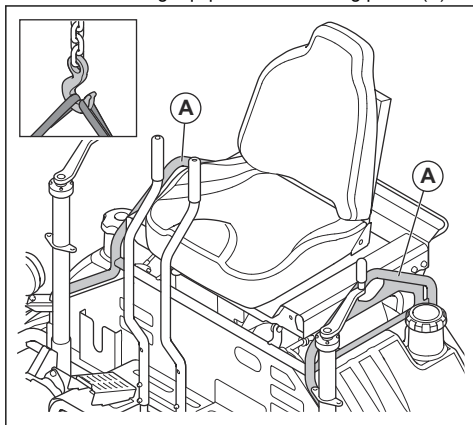


**WARNING:** Do not walk or stay below or near a lifted product.



**CAUTION:** Remove the blades before you lift the product. The blades can fall and cause damage.

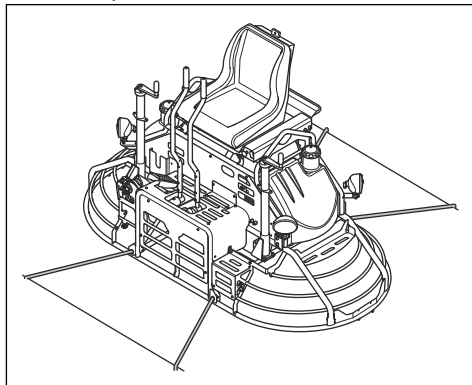
- Attach the lifting equipment to the lifting points (A).



### To prepare the product for transportation on a vehicle

1. If you lift the product onto the transportation vehicle, refer to *To lift the product on page 22*.
2. If the product is put on a trailer, do not use the trailer jack of the product as a support for the trailer tongue during transport.
3. Make sure that the blade pitch is set to 0° to prevent damage to the blades.

4. Safety the product to the transportation vehicle at the tie-down points.



### To prepare the product for long-term storage

Do the steps that follow before the product is kept in storage for more than 30 days.

- Do the necessary repairs. Repair paint damages to prevent corrosion.
- Do the maintenance. Refer to *Maintenance schedule on page 14*
- Lubricate all fittings.
- Start the engine, close the fuel valve and let the engine operate until it stops.
- Prepare the engine for long-term storage. Refer to the engine manual supplied by the engine manufacturer.
- Drain the fuel tank.
- Drain the water tank. If the ambient temperature is below freezing point, remaining water can cause damages to the retardant spray system.
- Remove the battery and charge it in regular intervals during storage.
- Clean the product before storage. Remove oil and dust from the rubber parts.
- Prepare the engine for long-term storage. Refer to *To prepare the engine for long-term storage on page 23*.
- Put a protective cover on the product.
- Keep the product in a dry and frost free area.
- Keep the product in a locked area to prevent access for children or persons that are not approved.

### To prepare the engine for long-term storage

- Clean the air filter before storage.
- Clean the cooling fins of the engine.
- Replace the engine oil.
- Do this engine maintenance procedure:

- a) Disconnect the spark plug cables and remove the spark plugs.
- b) Put approximately 30 ml/1 oz of SAE 30W oil into each engine cylinder through the spark plug hole.
- c) Install the spark plugs but do not connect the spark plug cables.
- Turn the ignition key to the start position for 2 seconds. This causes the engine shaft to rotate and the oil goes into the cylinders.
- Connect the spark plug cables.

## Disposal

- Chemicals can be dangerous and must not be discarded on the ground. Always discard used chemicals at a service center or an applicable disposal location.
- When the product is worn out, send it to the dealer or to an applicable recycling location.
- Oil, oil filters, fuel and the battery can have negative effects on the environment. Obey the local recycling requirements and applicable regulations.
- Do not discard the battery as domestic waste.
- Send the battery to a Husqvarna servicing dealer or discard it at a disposal location for used batteries.



## Technical data

Operation weight with transport wheels, EN500, kg/lb	423.5/932.5
Engine brand, type	Honda, GX690
Engine power, kW/hp @rpm <sup>1</sup>	16.5/22.1 @3600
Fuel tank volume, l/qts	24.6/26
Fuel type	Gasoline E10
Rotor speed minimum/maximum, rpm	25/165
Clutch type	CVT
Blade arm type	Bolt on
Blade pitch, °	0–25
Gearbox type	Heavy duty
Gearbox oil	Shell Omala S4 WE 460 or equal
Gearbox oil capacity, each gearbox, l/qts	1.6/1.7
Water/retardant tank volume, l/qts	24.5/25.8
Fuel consumption, l/h or qts/h	6.7 or 7
Troweling diameter, mm/in	915/36
Panning width, mm/in	1830/72
Quantity of blades	8
Blade finnish size, mm×mm/in×in	356×153/14×6
Blade combo size, mm×mm/in×in	356×203/14×8
Blade float size, mm×mm/in×in	356×254/14×10
EU5 CO2, g/kwh	751
Sound power level L <sub>w</sub> measured, dB(A) rel 1pW <sup>2</sup>	104.7
Sound pressure level L <sub>p</sub> at the operators ear, dB(A) <sup>3</sup>	91.2
Vibration value, m/s <sup>2</sup> <sup>4</sup>	2.94
Handle left/right, m/s <sup>2</sup>	2.94/2.55
Seat, m/s <sup>2</sup>	0.64

<sup>1</sup> As specified by the engine manufacturer. The power rating of the engine indicated is the average net output (at specified rpm) of a typical production engine for the engine model measured to SAE standard J1349/ISO1585. Mass production engines may differ from this value. Actual power output for the engine installed on the final product will depend on the operating speed, environmental conditions and other values.

<sup>2</sup> Measured sound power level L<sub>w</sub> according to EN 12649, EN ISO 3744. Uncertainty K<sub>WA</sub> 2.5 dB(A).

<sup>3</sup> Sound pressure level L<sub>p</sub> according to EN 12649, EN ISO 11201. Uncertainty K<sub>PA</sub> 2.5 dB(A).

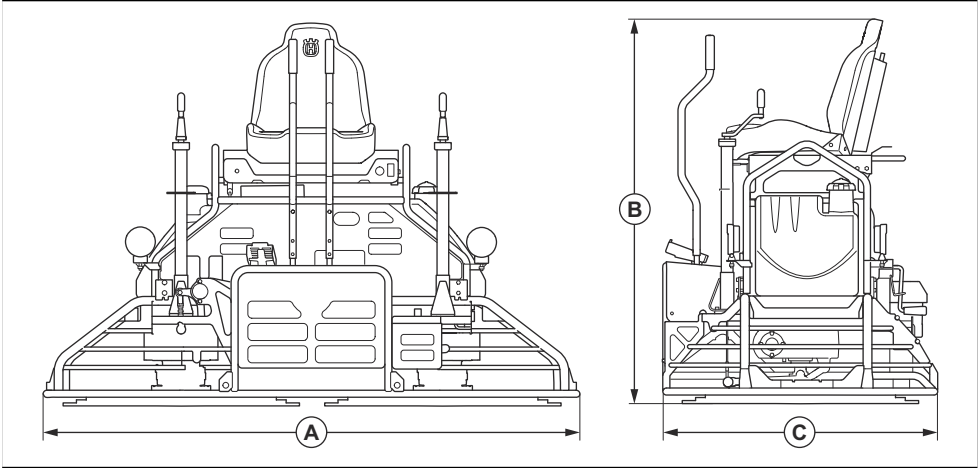
<sup>4</sup> Vibration value determined according to EN 12649. Reported data for vibration level has a typical statistical dispersion (standard deviation) of 1.5 m/s<sup>2</sup>.

For further information and questions about this specific engine, refer to the engine manual or the web site of the engine manufacturer.

## **Noise and vibration declaration statement**

These declared values were obtained by laboratory type testing in accordance with the stated directive or standards and are suitable for comparison with the declared values of other products tested in accordance with the same directive or standards. These declared values are not suitable for use in risk assessments and values measured in individual work places may be higher. The actual exposure values and risk of harm experienced by an individual user are unique and depend upon the way the user works, in what material the product is used, as well as upon the exposure time and the physical condition of the user, and the condition of the product.

## Product dimensions



<b>A</b>	Length, mm/in.	2046/80.1
<b>B</b>	Height, mm/in.	1459/56.8
<b>C</b>	Width, mm/in.	1044/41.1

---

## Accessories

---

Blade type	Intended use	Description
Floating disc	Floating operation	<ul style="list-style-type: none"><li>• Flat/curved.</li><li>• Attached on finish blades or combination blades.</li></ul>
Combination blade	Floating operation and troweling operation	<ul style="list-style-type: none"><li>• Replaces the other blade types.</li><li>• Can be used together with floating blades.</li></ul>
Finish blade	Troweling operation	<ul style="list-style-type: none"><li>• Small to maximum blade pitch.</li><li>• Symmetrical, flat on all edges.</li></ul>

---

# Declaration of Conformity

---

## EU Declaration of Conformity

We, **Husqvarna AB**, SE-561 82 Huskvarna, Sweden, tel:  
+46-36-146500, declare on our sole responsibility that  
the product:

Description	Concrete Smoothing Machine, Trowel
Brand	Husqvarna
Type/Model	CRT 36-26A
Identification	Serial numbers dating from 2025 and onwards

complies fully with the following EU directives and  
regulations:

Directive/Regulation	Description
2006/42/EC	"relating to machinery"
2014/30/EU	"relating to electromagnetic compatibility"

and that the following harmonized standards and/or  
technical specifications are applied;

EN ISO 12100:2010

EN 12649:2008+A1:2011

Partille, 2025-05-26



Christian Nyberg  
R&D Director, Concrete Surfaces & Floors  
Husqvarna AB, Construction Division  
Responsible for technical documentation



---

## Trademarks

---

LOCTITE is a registered trademark owned by Henkel  
Corporation. 545 is a trademark of Henkel Corporation.









[www.husqvarnaconstruction.com](http://www.husqvarnaconstruction.com)

Original instructions



1142158-26



2025-07-10